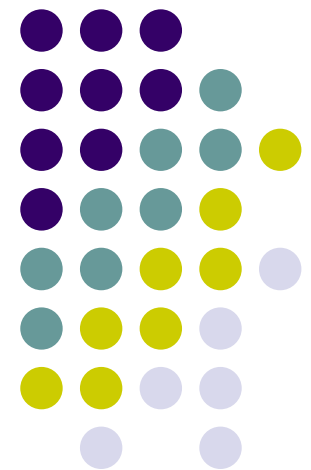


# Environmental Policy Review and Consolidation Study

Public Information Meeting  
June 27, 2007

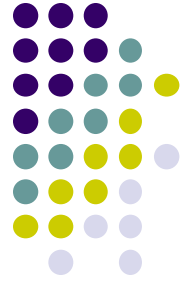




# Public Information Meeting

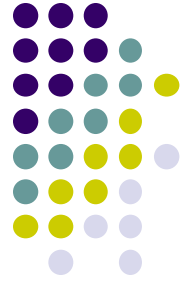
## Purpose:

- Present the findings of the inventory phase.
- Present and achieve consensus on the goal, objectives and principles as the basis of the Natural Heritage Network.
- Present and receive input on the mapping layers that will comprise Markham's Natural Heritage Network.
- Provide opportunity for comments that will be considered in the process of developing the final Natural Heritage Network and implementing policies.



# Study Background

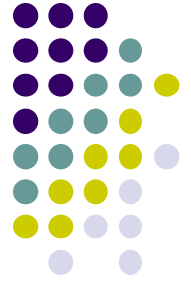
- EPRC was originally approved in 2004 but was temporarily suspended when the Province initiated the Greenbelt Planning process
- In January 2007 the scope of the study was revised and expanded and the study Terms of Reference were modified and approved
- A study team led by Schollen & Company Inc. has been retained to undertake the study



# Original Study Objectives

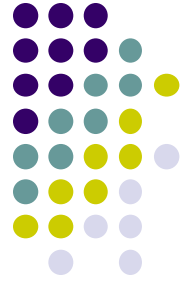
- Review natural features mapping and policy areas
- Review NFS objectives and targets
- Prepare Natural Heritage Network (NHN) base mapping
- Review Town's Greenway system (linked system)
- Identify issues and policy approach to address groundwater protection
- Review opportunities for greenways lands within the hydro corridors
- Prepare consolidated natural heritage policy framework for urban and rural lands
- Prepare environmental lands monitoring protocol
- Prepare draft OPA

# Additional Study Objectives (2007)



- Prepare Greenbelt conformity policy framework
- Map preliminary Rouge Park boundary at a broad scale
- Map detailed Rouge Park boundary (optional)
- Map potential Small Stream Study features at a preliminary scale
- Identify and recommend appropriate implementation of Duffin's Watershed Plan and Rouge Watershed Plan (not yet available)
- Recommend additional policy considerations required for Growth Plan conformity

# Entrenched Ecological Principles and Authority



- **Provincial Policy Statement**

Natural Heritage System means a system made up of *natural heritage features and areas*, linked by natural corridors which are necessary to maintain biological and geological diversity, natural functions, viable populations of indigenous species and ecosystems. These systems can include lands that have been restored and areas with the potential to be restored to a natural state.

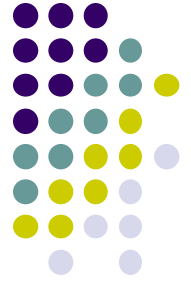
- **Greenbelt Plan**

External connections, Rouge North Management Plan, Conservation Authority Plans

- **Growth Plan**

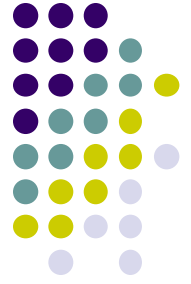
Watershed Plans

# Study Process



- ▶ Phase 1 Goal, Objectives, Principles, Mapping layers and Public Information Meeting (June 2007)
- Phase 2 Policy Formulation and Consolidation and Natural Heritage Network mapping (July – October)
- Phase 3 Draft Policy and Monitoring Protocol (DSC and Public Information Meeting Fall 2007)
- Recommendations Report December 2007

# Phase 1 Presentation



- Goal, Objectives and Principles
- The background and opportunities as the basis for Markham's draft Natural Heritage Network

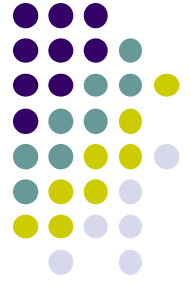


# Study Goal

To preserve and improve the biological diversity and ecological function in the Town of Markham for future generations through the protection of a Natural Heritage Network comprised of existing natural features, enhancement areas and ecological linkages of sufficient size to ensure a sustainable and healthy natural environment.



# Study Objectives

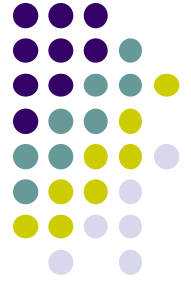


## 1. Establish a Natural Heritage Network (NHN)

Establish a Natural Heritage Network comprised of natural features, restoration areas and ecological linkages for wildlife and vegetation species, and including connections to adjacent municipalities.



# Study Objectives



## 2. Protect and Minimize Loss

Protect and minimize further loss of existing natural heritage features including wetlands, woodlands, meadowlands in key locations, fishery resources, small streams and rivers, valleylands and wildlife habitat in order to preserve and improve biological diversity and ecological function within the Town of Markham



# Study Objectives

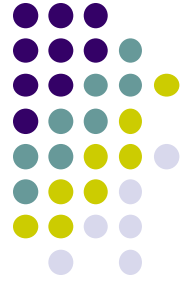


## 3. Protect Biodiversity

Protect and enhance habitats within the Natural Heritage Network which support biodiversity.

## 4. Increase Natural Vegetation

Where possible and in accordance with local, regional and provincial policy, improve and enhance the biological diversity and ecological function of the Natural Heritage Network through the restoration of lands within the Natural Heritage Network.

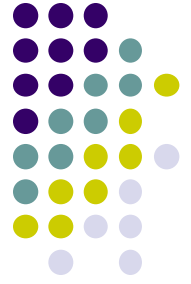


# Study Objectives

## 5. Balance Public Use

Incorporate pedestrian trails into the Natural Heritage Network in accordance with the Town's Trails and Pathway Master Plan to encourage the use and enjoyment of the Town's Natural Heritage Network while having regard for site sensitivities and the primacy of maintaining long term ecological health of the Natural Heritage Network.





# Study Objectives

## 6. Senior Government Policy

Support and implement senior government natural heritage policy and coordinate to achieve multiple objectives.

## 7. Support Partnerships

Identify the potential for, and create and support partnerships with government, agencies, landowners and non-profit groups to assist with the implementation of the Natural Heritage Network and its long-term maintenance and improvement.

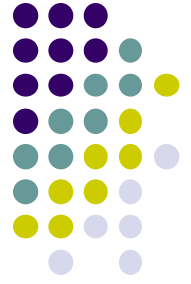
# Study Objectives



## 8. Monitor and Manage

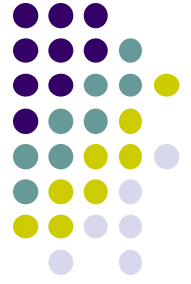
Implement monitoring protocols to identify the need for and refinement of management initiatives aimed at improving the ecological health of the Natural Heritage Network.

# Guiding Principles



## The Natural Heritage Network shall consider:

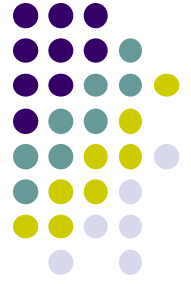
1. Existing natural heritage features.
2. Lands that have been identified through past studies and policies as requiring protection.
3. Potential lands required to create a full functioning Natural Heritage Network within the Town of Markham as determined by scientific principles.
4. Linkages to the natural heritage systems of adjacent municipalities and adjoining watersheds.
5. Plans prepared by senior levels of government including watershed plans and management plans.



# Mapping Products

- Existing Natural Heritage Features
- Existing Policy Areas that support the protection and enhancement of Natural Heritage Features
- Potential opportunities for enhancement of ecological function

# Existing Natural Heritage Features

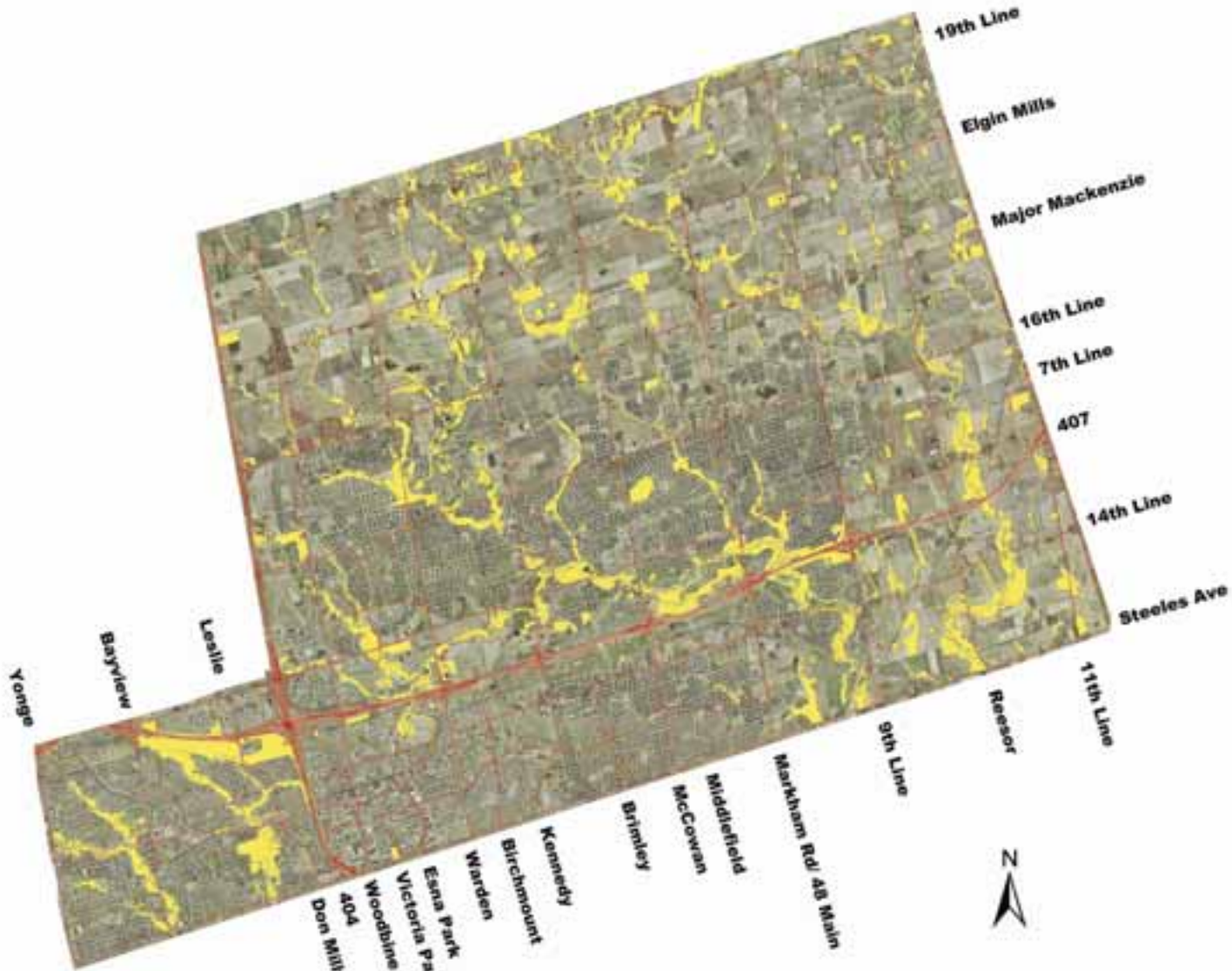


## Comprise:

- Valleylands (Town, TRCA and Provincial data sets)
- Woodlands (Town, TRCA, Region and Provincial data sets)
- Wetlands (Provincial data set)
- Meadowlands, Successional and Beach/Bluff (Provincial and TRCA data sets)



### Existing Features



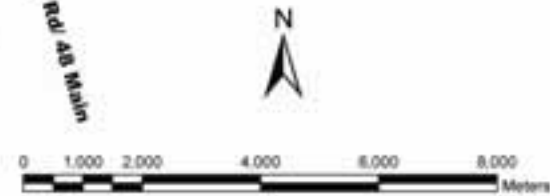
Legend

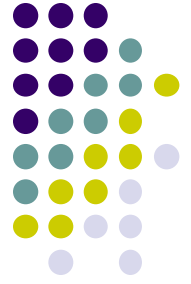
- Existing Natural Features
- Roads

1: 25 000 June 2007

KIDD Environmental  
The Planning Partnership

Town of Markham Environmental Policy Review and Consolidation





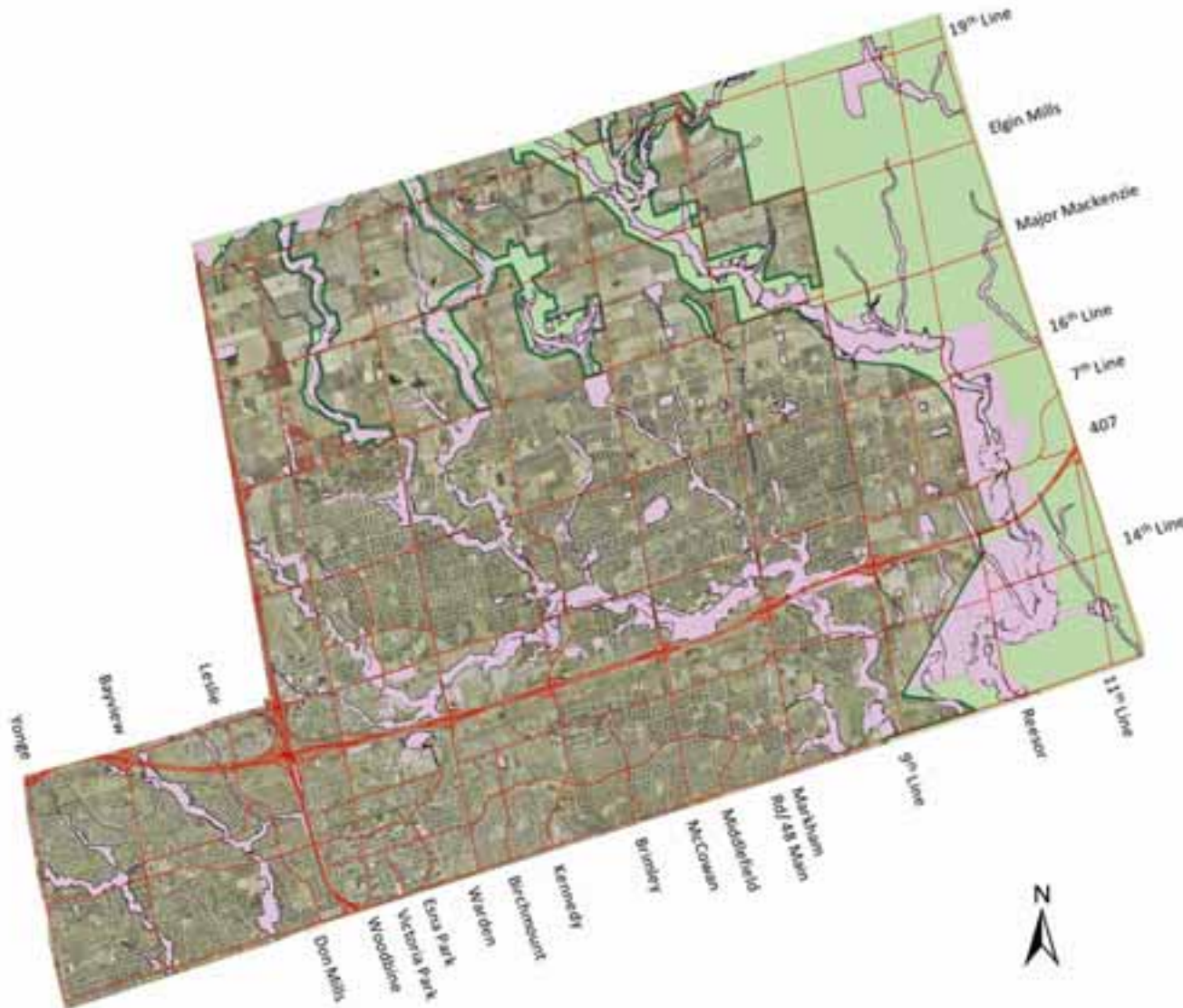
# Existing Policy Areas

## Comprise:

- Federal Greenspace Corridor
- Provincial ORM Linkage Areas, Significant Wetlands and Greenbelt
- TRCA Environmentally Significant Areas
- Existing Rouge Park, Future Rouge Park and Rouge Park corridors
- Markham's Official Plan designations (Hazard Lands, Environmental Protection Areas and Special Policy Areas and Locally Significant Areas)



### Existing Policy Areas



Legend

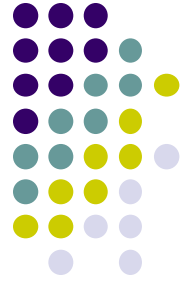
- Provincial Greenbelt
- Markham Policy Areas
- Roads

1: 25 000 June 2007

WILSON & CO. INC. KIDD  
South Bay Environmental Inc.  
The Planning Partnership



Town of Markham Environmental Policy Review and Consolidation



# Potential Opportunities

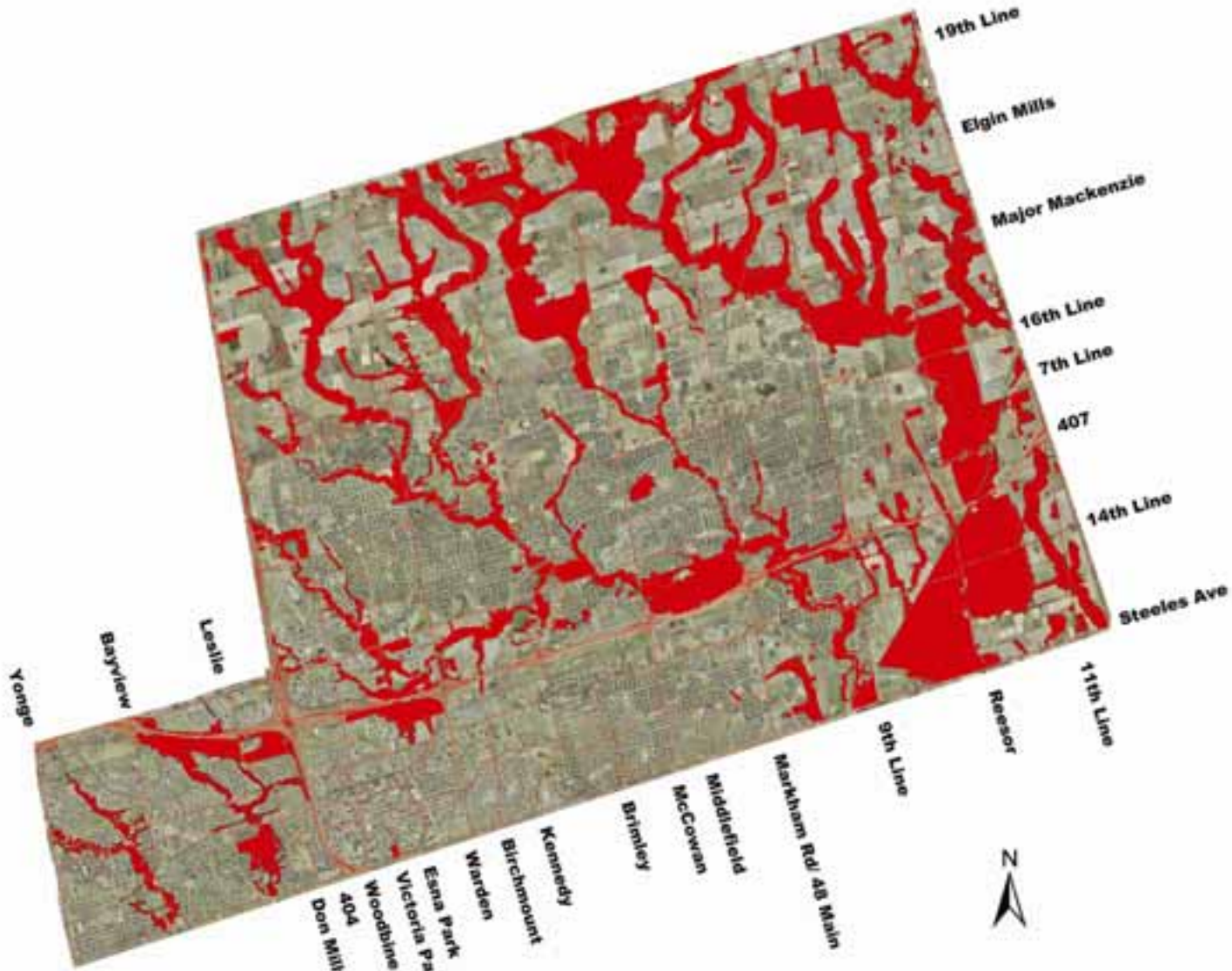
## Comprise:

- Toronto and Region Conservation Authority  
Terrestrial Natural Heritage System Mapping  
(non-statutory)
- Nodes (Scientific principles, Natural Features  
Study)
- Ecological Corridors (Scientific principles,  
Natural Features Study)



### Potential Opportunities

### TRCA Terrestrial Natural Heritage System



Legend

- TRCA Potential Natural Cover
- Roads

1: 25 000 June 2007

KIDD Environmental Inc.  
The Planning Partnership

Town of Markham Environmental Policy Review and Consolidation



### Future Rouge Park and Existing Rouge Park

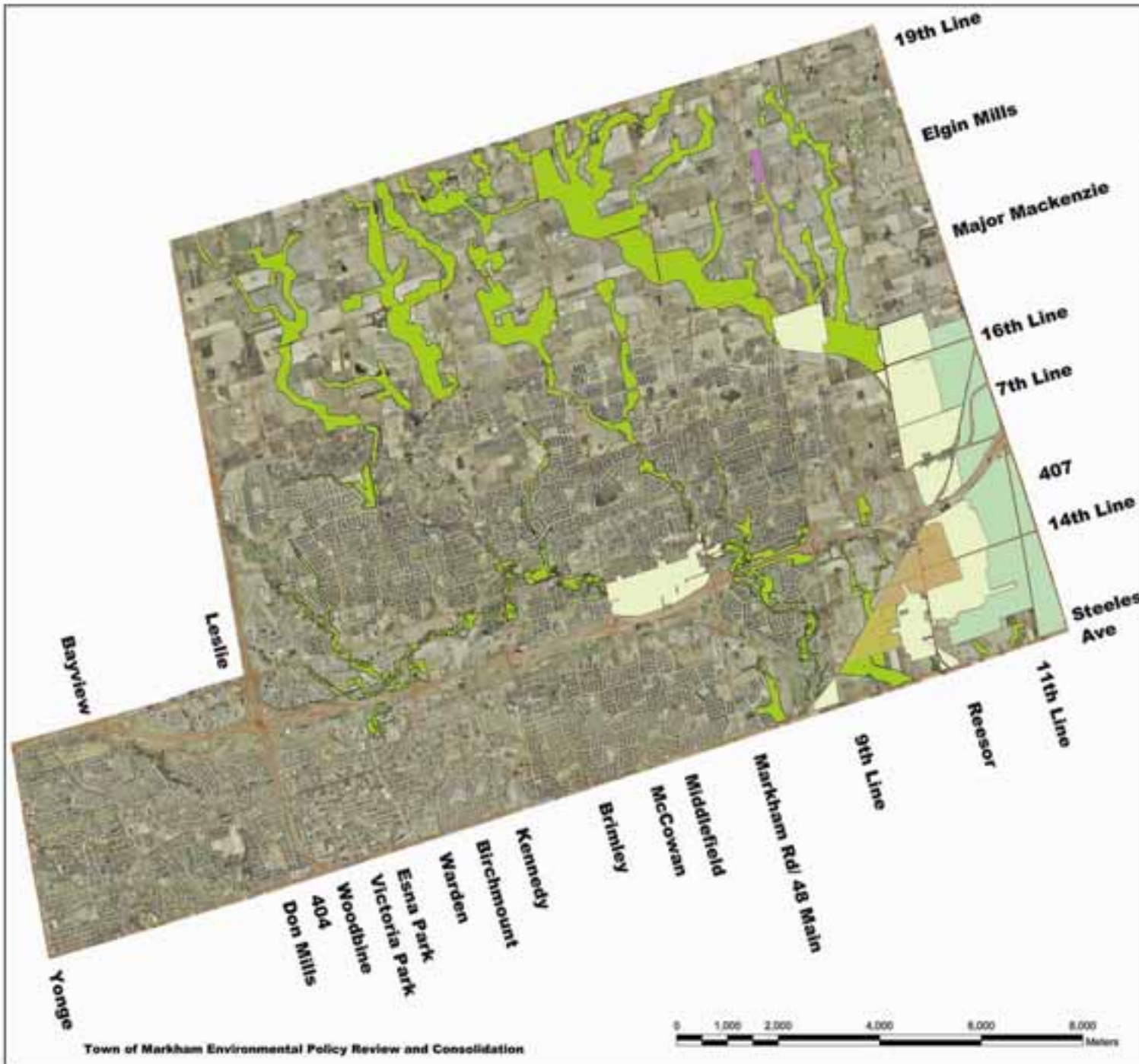
#### Legend

- Red-rouse Park
- Existing Rouge Park
- Rouge Park Expansion
- Future Rouge Park and Corridor
- Roads
- Municipal Boundary
- Alternate Rouge Park Corridor (Federal Lands)



1: 25 000 June 2007

North-South Environmental Inc.





### Potential Future Rouge Park Overlay on Policy Areas



Legend

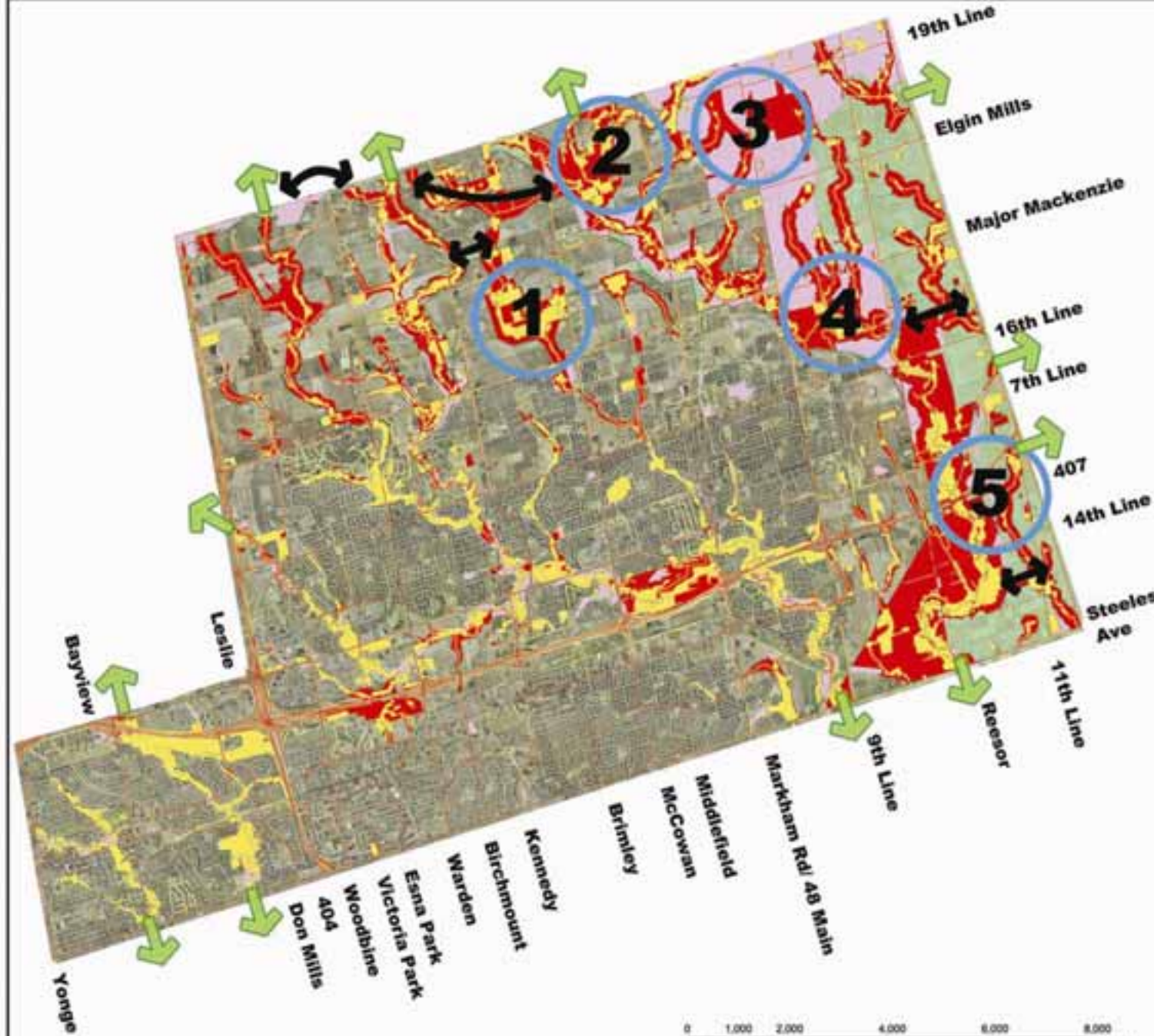
- Roads
- Markham Policy Areas/  
Provincial Greenbelt
- Potential Rouge Park

1: 25 000 June 2007

KIDD Environmental Inc.  
The Planning Partnership

Town of Markham Environmental Policy Review and Consolidation

**Framework for Natural Heritage Network Potential Enhancements**



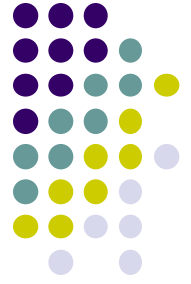
**Legend**

- 1 Precursor Wetlands
- 2 Confluence of 2 Streams  
- Connection to Oak Ridges Moraine - Little Rouge Creek Corridor
- 3 Toronto Region Conservation Authority  
Toronto Natural Heritage System Strategic  
Federal Designation  
- Opportunity for Significant Enhancement
- 4 Confluence of 2 Streams Little Rouge  
Creek Corridor Connection to Duffins Creek
- 5 Little Rouge Creek Corridor Connection to Peleeau
- Potential Ecological Cores
- ↔ Potential Ecological Linkages
- ➔ Potential Ecological Linkages to  
Adjacent Watersheds
- Existing Natural Features
- Toronto Region Conservation Authority Potential  
Natural Cover
- Markham Policy Area
- Potential Ecological  
Cores
- Roads
- Municipal Boundary



1: 25 000 June 2007

# Next Steps



- Confirmation and refinement of mapping layers
- Stakeholder Meeting in July – August
- Detailed Boundary Delineation Process
- Policy Framework and Natural Heritage Network in the Fall 2007