

When purchasing electrical appliances and fixtures, look for the Canadian Standards Association or the ULC seal of approval. This is your assurance that products have been tested for shock and fire hazards.

The Electrical Safety Authority requires that CSA tested and listed electrical appliances and fixtures be used in Ontario.



There are three basic classes of fire extinguishers. Fire extinguishers must be labelled to show the class of fire they can extinguish.

### Class A:



Ordinary combustibles such as paper, wood, rubbish, drapes and upholstery.

### Class B:



Flammable liquids such as gasoline, oils, solvents, paints and flammable gases.

### Class C:



Electrical fires involving Class "A" or "B" materials and live electrical power - overheated wiring, fuse boxes, stoves, motors, etc.

These fire extinguishers are safe for use on all common household fires and are available in rechargeable and non-rechargeable types.

The extinguisher must be tested and listed by The Underwriters Laboratories of Canada (ULC). Look for the ULC label on the extinguisher.



## Markham Fire & Emergency Services

101 Town Centre Boulevard  
Markham, Ontario  
L3R 9W3

[www.city.markham.on.ca](http://www.city.markham.on.ca)

Phone: (905) 415-7521  
8:30 am to 4:30 pm, Monday to Friday

(905) 477-2011  
after hours, weekends, holidays

Fax: (905) 479-7770



## Smoke Alarms Save Lives

Please remember...  
the **Ontario Fire Code** requires a working **smoke alarm** on every level of your home, including the basement, that contains a sleeping area.

Call



For **ANY** Emergency

# Check Your Home for

FIRE HAZARDS



Check the rooms of your home today. Make them safe for your family

## DO IT NOW!

### KITCHEN

Remove pans of cooking fats and oils from the stove when not in use — it is easy to turn on the wrong burner.

Unplug kettles, fry pans and other appliances when not in use. Do not hang wearing apparel above the stove to dry — they may fall on a burner.

Keep matches and lighters out of the reach of children. Use only safety matches.

Have an approved fire extinguisher handy for grease fires.

### LIVING ROOM

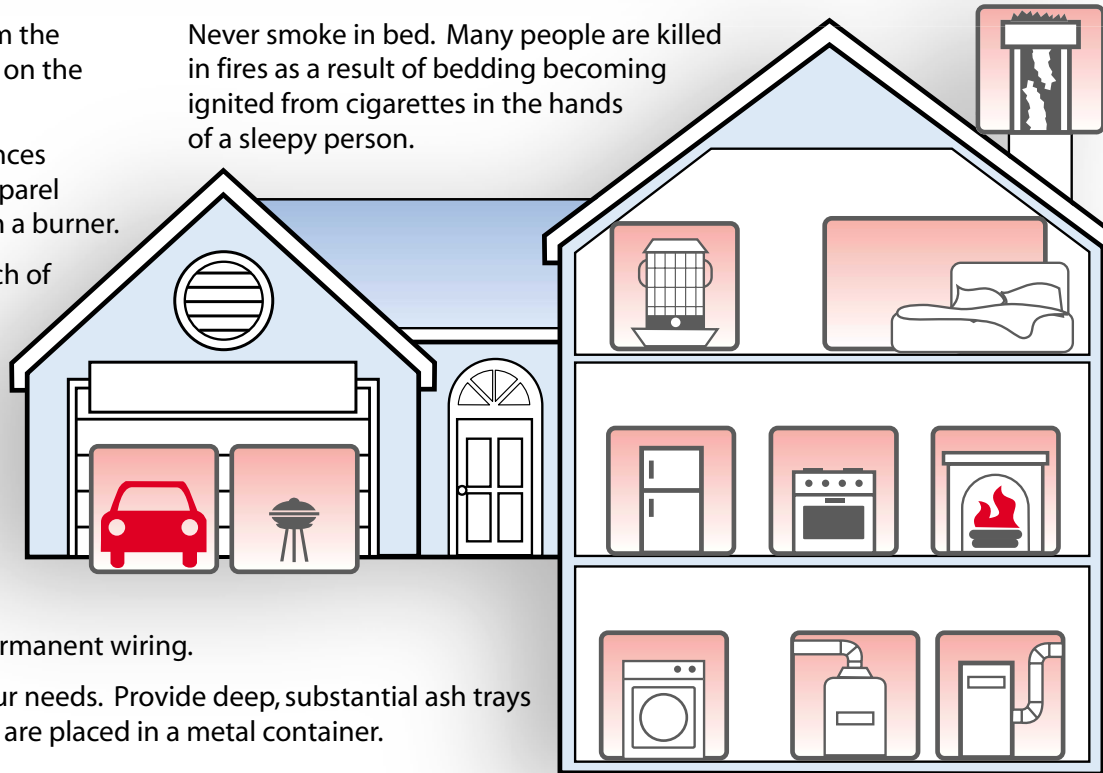
Provide fire screens for fireplaces as flying brands or a spark can easily start a fire.

Do not use extension cords in place of permanent wiring.

Provide sufficient electrical outlets for your needs. Provide deep, substantial ash trays for smokers and ensure that the contents are placed in a metal container.

### BEDROOM

Never smoke in bed. Many people are killed in fires as a result of bedding becoming ignited from cigarettes in the hands of a sleepy person.

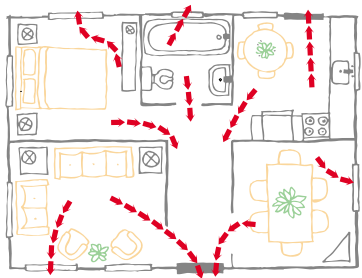


### BASEMENT & GARAGE

Remove all unnecessary combustibles from the basement and garage areas. If not removed, they will add considerable fuel to a fire and make it easier for a fire to start. Never store propane cylinders in the basement or garage.

Have service personnel check and service the furnace, chimney and flue connections at least once a year. Remove flammable liquids from the house.

Remove oversized fuses. A 15 ampere fuse is required for regular domestic circuits and, if in doubt, consult a qualified electrician. Have your wiring checked periodically.



It is recommended your home have at least one smoke alarm on every level, including the basement.

Make sure everyone knows the two ways out of each bedroom. Beware stairs can become a chimney for smoke, hot gas and fire. Remember,

## PLAN FOR A FIRE

nobody goes back for clothes, toys or pets.

A window can be used as an alternate exit if they lead to a garage or patio roof.

A second alternative would be to purchase a folding escape ladder that can be stored under the window or bed for easy accessibility.

Don't risk serious injuries by jumping in panic from a high window. Stay in the room, close the door

tightly. Open a window and sit on the floor to get fresh air. Hang out a sheet to show rescuers your location.

A hot door is a warning. Never open a door without checking it for heat and look to see if smoke is leaking in around the edges. Keep all doors closed at night, particularly the basement, kitchen and bedroom doors.

Get a neighbour to call the fire department after everyone has evacuated. Speak slowly on the phone and give your location and address.