

AREA CONTEXT ZONING

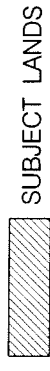
APPLICANT: NEAMSBY INVESTMENTS INC.
298 OLD KENNEDY ROAD

FILE No: SU 06121933 (TK)



DEVELOPMENT SERVICES COMMISSION

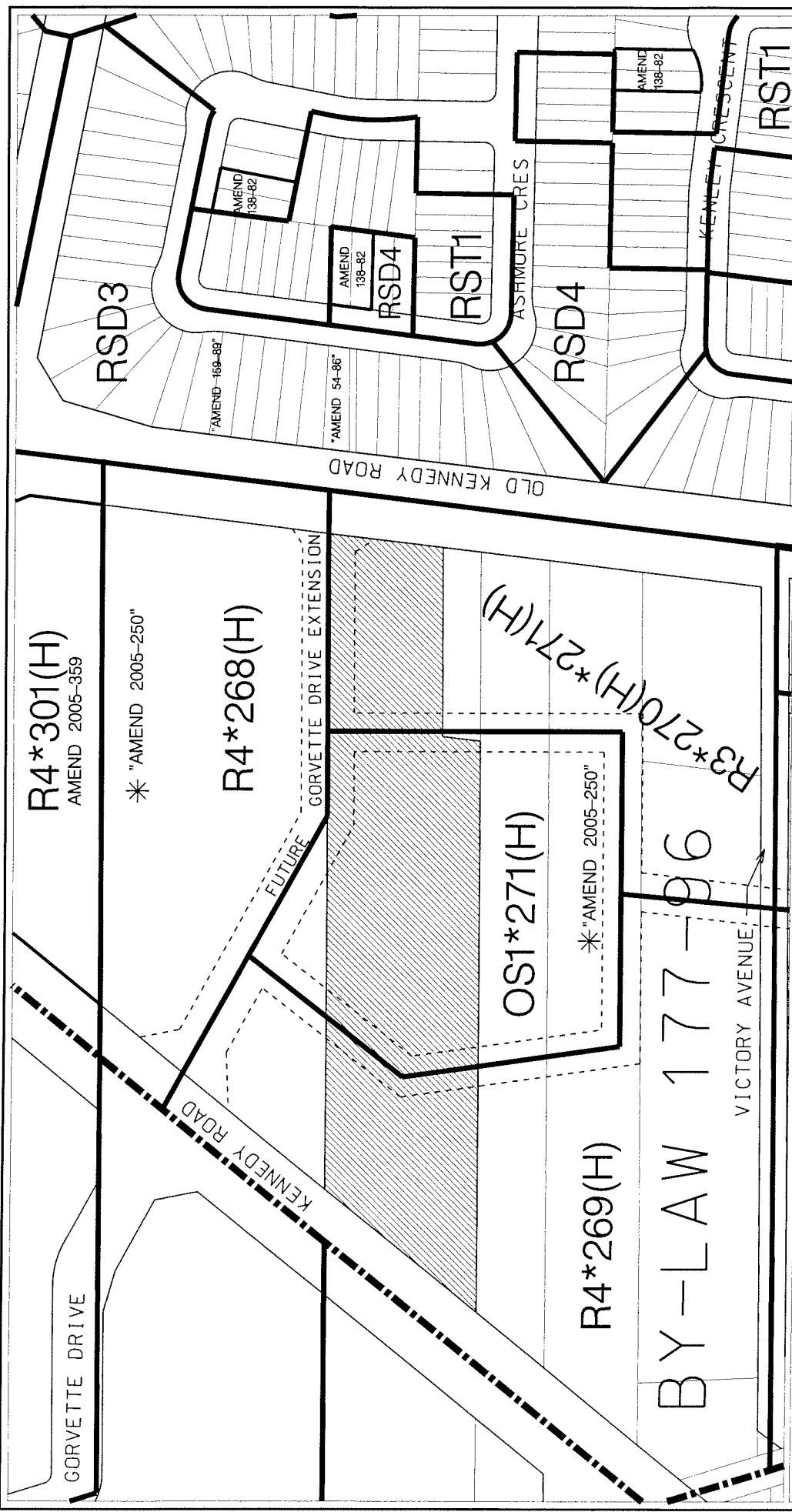
su06121933.dgn 18/10/2006 2:45:24 PM

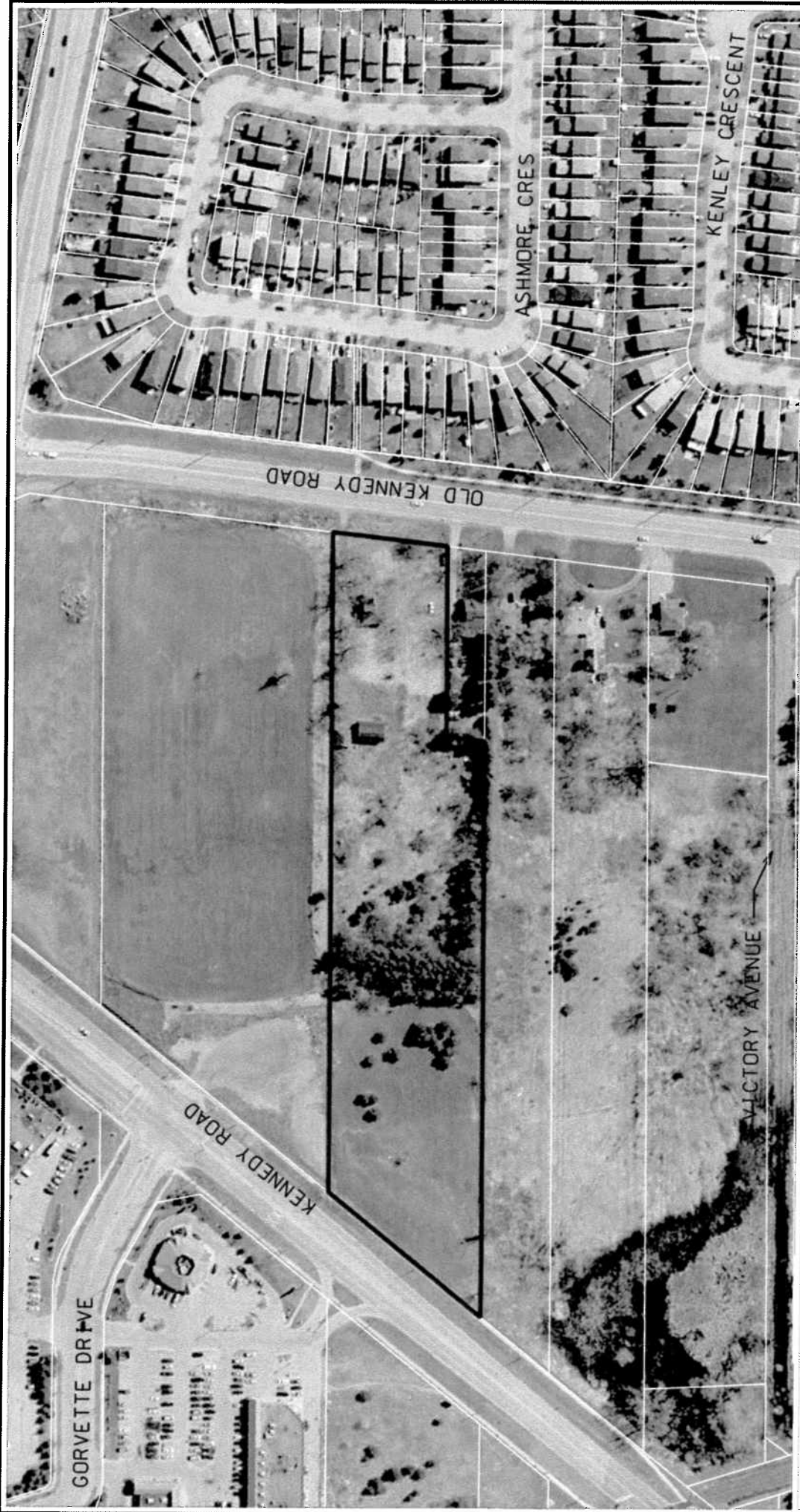


DATE: 210906

DRAWN BY: CPW CHECKED BY: TK SCALE 1:

FIGURE No.2





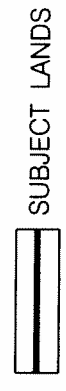
AIR PHOTO (2005)

APPLICANT: NEAMSBY INVESTMENTS INC.
298 OLD KENNEDY ROAD

FILE No: SU. 06121933 (TK)



DEVELOPMENT SERVICES COMMISSION

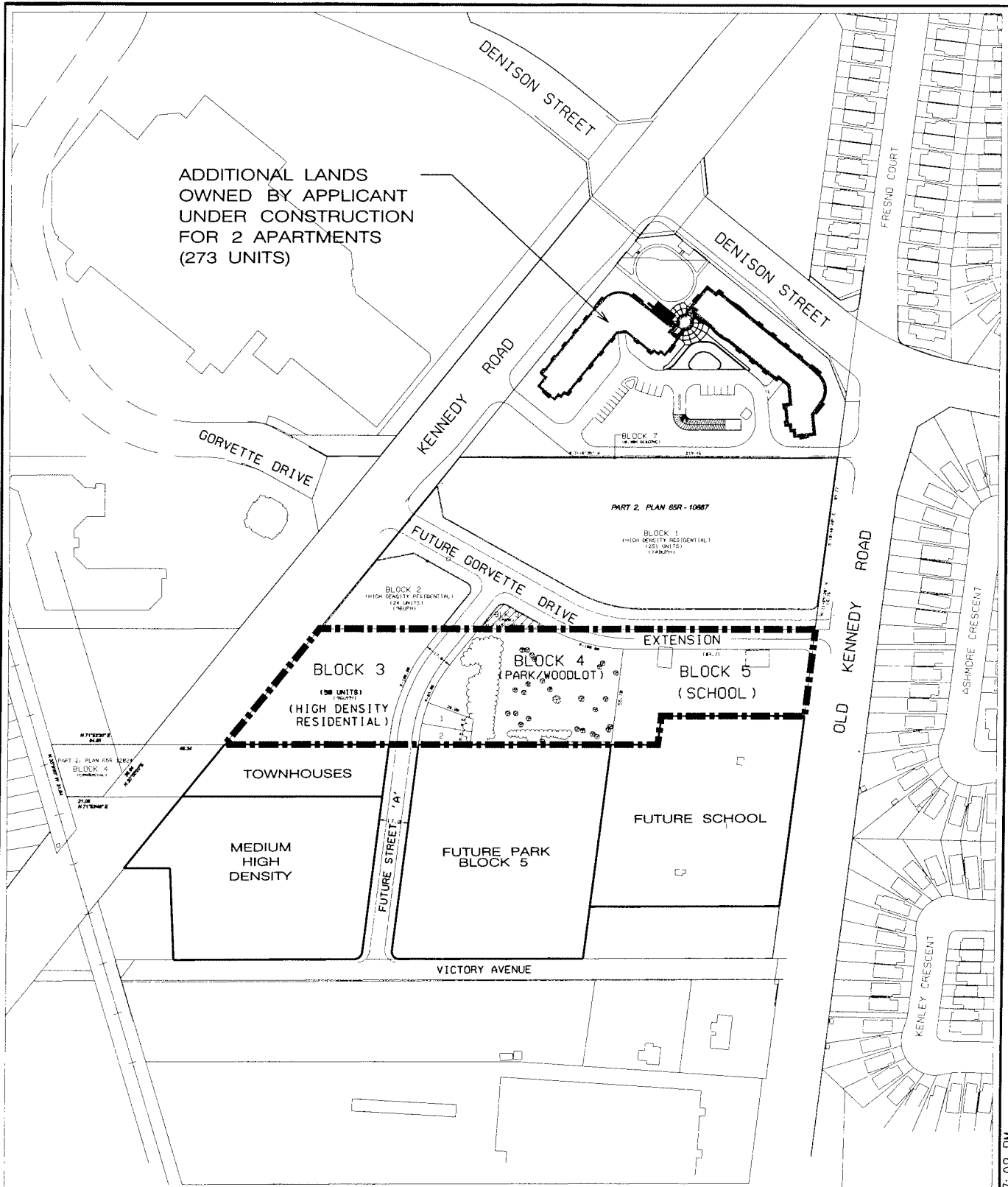


SUBJECT LANDS

DATE: 210906

FIGURE No.3

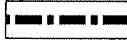
DRAWN BY: CPW CHECKED BY: TK SCALE 1:



PROPOSED DRAFT PLAN OF SUBDIVISION

APPLICANT: NEAMBY INVESTMENTS INC.
298 OLD KENNEDY ROAD

FILE No: SU.06121933 (TK)

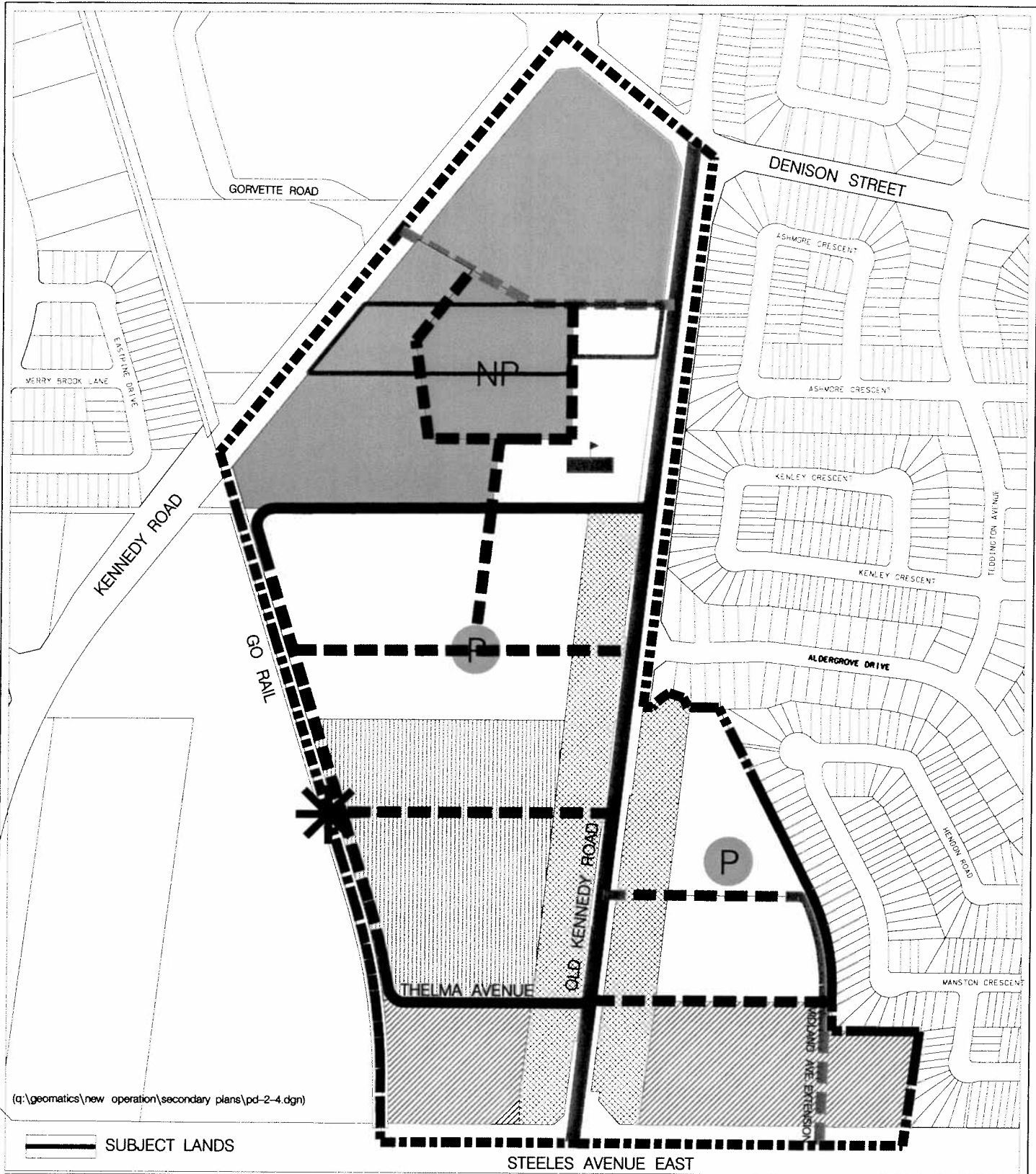
 SUBJECT LANDS
DATE: 210906



DWN BY: CPW CHK BY: TM SCALE 1:

FIGURE No.4

SU06121933.DGN 25/10/2006 2:57:08 PM



(q:\geomatics\new operation\secondary plans\pd-2-4.dgn)

SUBJECT LANDS

STEELES AVENUE EAST

SCHEDULE 'AA' – DETAILED LAND USE PLAN

Secondary Plan for Part of the Risebrough Planning District (PD-2-4)

	BOUNDARY OF AREA COVERED BY THIS SECONDARY PLAN		URBAN RESIDENTIAL HIGH DENSITY I		LOCAL ROAD
	COMMUNITY AMENITY AREA - MAIN STREET		URBAN RESIDENTIAL HIGH DENSITY II		LOCAL ROAD (CONCEPTUAL)
	COMMUNITY AMENITY AREA - STEELES AVENUE		PARKETTE		MINOR COLLECTOR ROAD (CONCEPTUAL)
	COMMUNITY AMENITY AREA - MIXED USE		NEIGHBOURHOOD PARK		PEDESTRIAN LINKAGE
	URBAN RESIDENTIAL MEDIUM DENSITY		MAJOR COLLECTOR ROAD		ELEMENTARY SCHOOL



SCHEDULE 'AA' TO PART III OF OPA_144

DWN BY: CPW

CHK BY: MW

SCALE:
DATE: 310305