



# Location Of Required Power Door Operators In A Building

The Building Standards Department issues Builder Tips as part of our customer service program. They are designed to provide an improved understanding of the Building Code and to reduce the costs associated with correcting infractions. Please contact your area building inspector for further information or call the Building Standards Department at 905.475.4848 extension 2189

## 3.8. Barrier Free Design

### 3.8.1.1. Application (See Note A-3.8)

- (1) The requirements of this section apply to all buildings except
- (a) detached houses, semi-detached houses, houses with secondary suites, duplexes, triplexes, townhouses, row houses and boarding or rooming houses with fewer than 8 boarders or roomers, (See Note A-1.4.1.2.(1) of Division A, Secondary Suite)
  - (b) buildings of group F, Division 1 major occupancy, (See Note A-3.8.1.1.(1)(b))
  - (c) buildings that are not intended to be occupied on a daily or full time basis, including automatic telephone exchanges, pumphouses and substations, and
  - (d) camps for housing of workers. (See Note A-3.8.1.1.(1)(d))

## OBJECTIVE

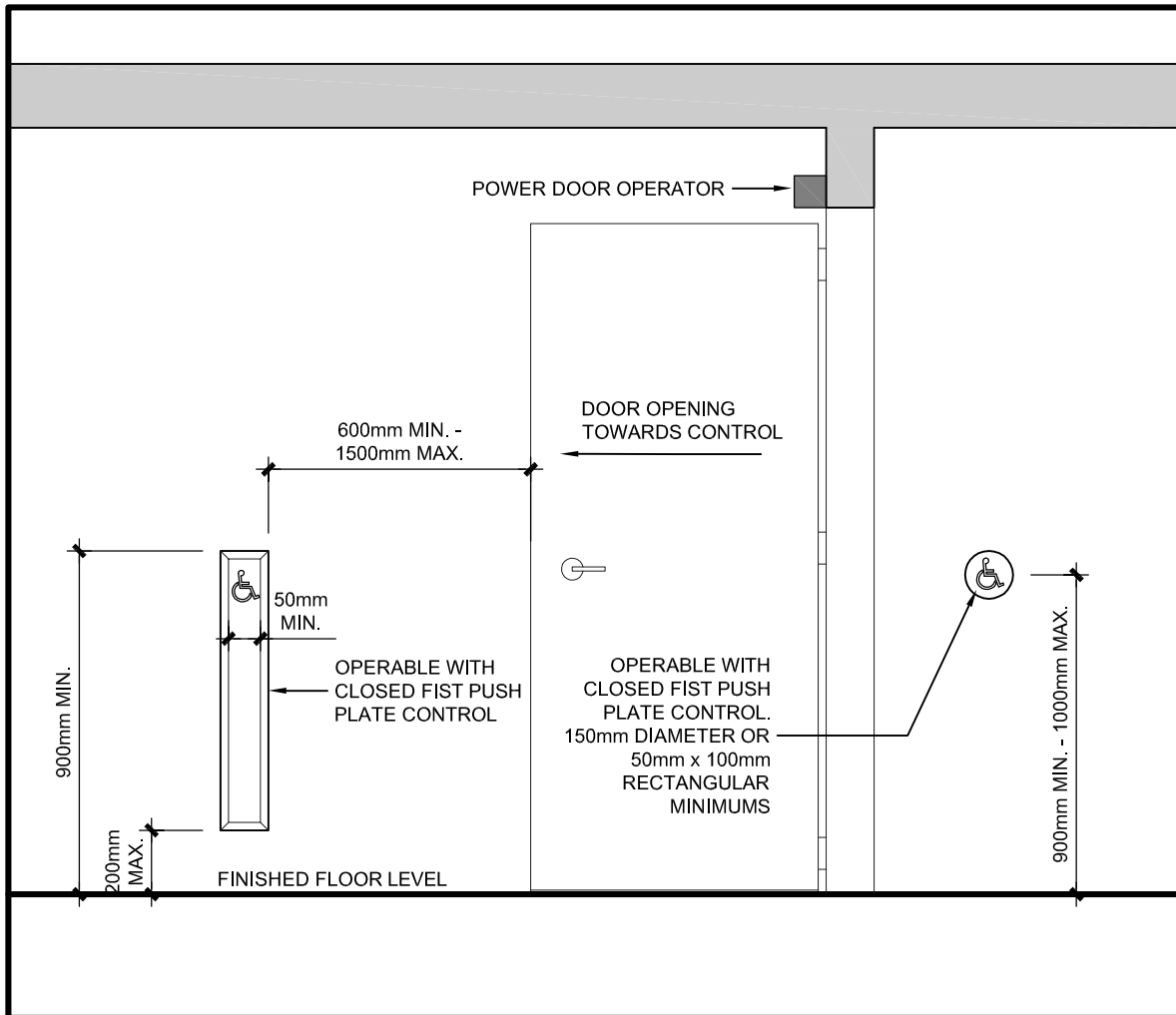
Section 3.8 contains minimum provisions to accommodate a person using a manual wheelchair or other manual mobility assistance devices such as walking aids. The Building Code also includes provisions to address the needs of people with sensory disabilities.

The following Building Code Articles contain provisions that relate to the location and installation of required power door operators.

- 3.8.1.2. Entrances
- 3.8.2.4. Hotels
- 3.8.3.3. Doorways and Doors
- 3.8.3.12. Universal Washrooms



This Builder Tip has summarized the power door operator location requirements required by the Building Code. Additionally, the diagram on the next page provides the installation requirements for power door operators.





Building Location	Conditions For Requirement	Code Reference
Entrance to Building <sup>(1)</sup>	Except as permitted by Sentence (12), every door that provides a barrier-free path of travel through a barrier-free entrance referred to in Article 3.8.1.2. shall be equipped with a power door operator. (See Note A-3.8.3.3.(4)).	3.8.3.3.(4)
Universal Washroom	Door equipped with a power door operator if the door is equipped with a self-closing device,	3.8.3.12.(1)(i)
Public Use Washroom <sup>(2)</sup>	Door serves a washroom for public use that is required to be barrier-free <sup>(2)</sup>	3.8.3.3.(6)(a)
Hotel Suite	Entrance door to a suite required to have a barrier-free path of travel (10% of suites in a hotel to maximum 20 suites)	3.8.2.4.(5)
Vestibule Door <sup>(1)</sup>	Except as permitted by Sentence (12) where a barrier-free entrance referred to in Article 3.8.1.2. incorporates a vestibule, a door leading from the vestibule into the floor are shall be equipped with a power door operator.	3.8.3.3.(5)
Group A Occupancy	Each door that serves a Group A occupancy within a Group C major occupancy apartment building.	3.8.3.3.(6)(b)
Universal Washroom	Door serves a universal washroom that is for public use <sup>(2)</sup>	3.8.3.3.(6)(a)
Barrier-free Path of Travel	<p>Where the clear space on the latch side of the door is;</p> <ul style="list-style-type: none"> <li>• Less than 600 mm beyond the edge of the door opening if the door swings toward the approach side,</li> <li>• Less than 300 mm beyond the edge of the door opening if the door swings away from the approach side, and</li> <li>• Less than 300 mm beyond both sides of a sliding door</li> </ul> <p><b>(Please note that if the above requirements are not achievable a power door operator is required.)</b></p>	3.8.3.3.(10)



#### Notes to Table

(1) 3.8.3.3.(12) Only the active leaf in a multiple leaf door in a barrier-free path of travel need conform to the requirements of this Article.

(2) Public Use means, when applied to plumbing fixtures, fixtures in general washrooms of schools, gymnasiums, hotels, bars, public comfort stations and other installations in which fixtures are installed so that their use is unrestricted.