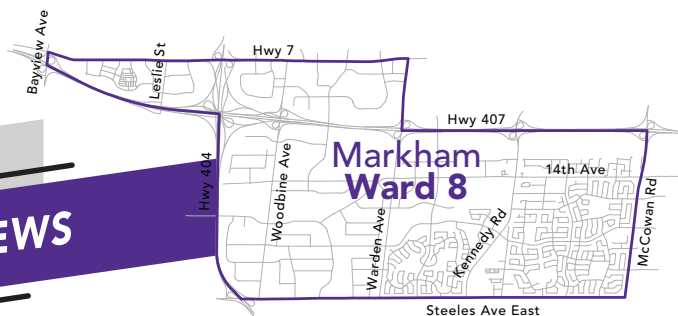




YOUR WARD



NEWS



**Isa Lee**

Ward 8 Councillor



Winter 2021

## Dear Ward 8 Residents,

I would like to wish everyone a happy holiday season.

It's the season of giving. Last year, as some of you may know, I organized a Care Package Giveaway, which received an incredible amount of support from the community. With this in mind, I am organizing another event this year – 2021 Fight Hunger Food Drive Challenge – gathering both food and monetary donations from residents and businesses to help provide food for families in need during the winter season. I have raised the targeted \$100,000 in donations, and will be holding the food drive between December 1 -23. Foods and donations will be given to 105 Gibson Centre Food Bank, The Food Bank of York Region as well as the Markham Food Bank. (Please go to [isalee.ca/fighthungerfooddrive/](http://isalee.ca/fighthungerfooddrive/) to learn more)

In the past year, our community has begun to move towards a better position since the pandemic began. With the increase of vaccinations and reopening of businesses, seniors and residents have been able to reconnect again and resume various physical activities in a safe manner.

With the winter season upon us, a lot of residents will be happy to know that the City of Markham has expanded its Pathway Winter Maintenance Program to include 95 pathways, and also adding five new outdoor skating rinks this winter season to provide everyone with more opportunities for outdoor activity and recreation. I trust these new additions and service changes will help keep everyone safe and active.

Once again, I wish you a holiday season full of warmth and joy!

Yours Sincerely,

*Isa Lee*  
Councillor Isa Lee  
Ward 8,  
City of Markham

### KEEP YOUR NEIGHBOURHOOD SAFE!

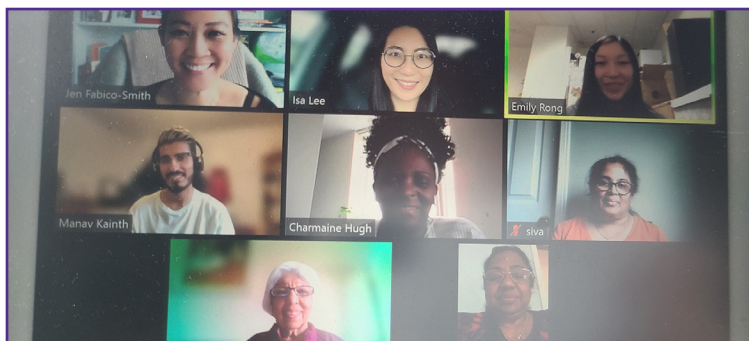
Join our Ward 8 Neighbourhood Watch program to keep your neighbourhood safe! Please contact [neighbourhoodwatchward8@gmail.com](mailto:neighbourhoodwatchward8@gmail.com) for more information.



Supporting 105 Gibson Centre Food Bank. Presenting a tray of food for a 4 person family's weekly needs.



Joining the Armadale Older Adults Club as they resume their physical sports program at Aaniin Community Centre



South Markham Community Action Table meeting with leaders and representatives from our neighbourhoods to discuss affordable housing issues

**Looking for more frequent updates?  
Let me know!**

Send an email to

**[ilee@markham.ca](mailto:ilee@markham.ca)**

to subscribe to our digital newsletter

\* This newsletter is intended for the residents of Ward 8. Residents in adjacent wards may receive this newsletter as a result of Canada Post's distribution routes that do not align with Markham ward boundaries."



## SLOW DOWN! KEEP OUR ROADS SAFE

Speed advisory display boards help educate and modify driver behaviour by reducing vehicle speeds in our community. Data collected from the display boards over the past several years has shown that, while deployed, vehicle speeds can be reduced by up to 20%.

Please see the latest locations of the speed advisory display boards in Ward 8 for January – March 2022:

- Randall Avenue, at Randall Public School Zone
- South Park Road, between Saddlecreek Drive and Times Avenue
- Clayton Drive, between Blackcombe Gate and Harvest Moon Drive

For more information on the program, please refer to the City's Traffic Engineering website at [markham.ca/traffic](http://markham.ca/traffic), and click on "Speed Management"



## RISEBROUGH PARK PATHWAY EXTENSION COMPLETE

Last year, I made a request to staff to improve this specific pathway so that residents can better access Risebrough Park from Birchmount Road. I am happy to let you know that the pathway extension in Risebrough Park is now complete. I trust that it will be a positive addition to the park and that residents will be able to make good use of this pathway.



## SAFETY REMINDER – SEE AND BE SEEN!

Winter months means fewer hours of daylight and reduced visibility.

If you're planning a night-time walk or bike ride, remember to wear reflective clothing and carry a flashlight.

## FIVE NEW OUTDOOR SKATING RINKS IN MARKHAM THIS WINTER

The City of Markham is adding five new outdoor public skating rinks this winter season - including one in the Milliken Mills Park in Ward 8.

Residents will be able to enjoy outdoor skating at five new unrefrigerated ice rinks at Milliken Mills Park, Huntington Park, Victoria Square Park, Markham Museum, and Milne Dam Park. The City will construct and maintain these rinks which will be made available pending weather conditions. A flag system at each location will signal when the ice is safe to use. Onsite parking is available at all locations.

Together with the Markham Civic Centre outdoor refrigerated ice rink, these locations will provide easier access to residents in all parts of Markham, and offer safer and professionally maintained skating experiences.

A friendly reminder to stay off Markham's ponds, stormwater ponds and waterways as the ice is unsafe and not maintained for recreation purposes. Ponds may contain salt from nearby roads and other debris, which can speed up thawing. Ice may appear thick, but it is unpredictable and some areas may have little to no ice. Stay safe and stay off natural ice!

## EXPANSION OF PATHWAY WINTER MAINTENANCE PROGRAM

Since the pandemic I have received many calls from residents requesting the City to expand the winter maintenance program to include pathways. I am happy to let you know that following the successful Pathway Winter Maintenance Pilot Project in 2020, the City of Markham is expanding the Pathway Winter Maintenance Pilot Project from 8 to 95 City asphalt or concrete pathways, for a total of 29.5 kilometers.

These pathways will be cleared within 24 to 48 hours following the end of a winter event where snow accumulation exceed 5 centimetres.

A total of 11 pathways in Ward 8 will be included in this program this winter:

### ***Ada MacKenzie Park***

#### ***Aldergrove Park***

– Tangmere Crescent to Aldergrove Drive

#### ***Armada Park***

– Armada Community Centre to Kenborough Court

#### ***Denison Park***

– Kimbark Crescent to Denison Street

#### ***Eastpine Park***

– Eastpine Drive to Kennedy Road

#### ***Harvest Gate***

– Harvest Moon Drive to Providence Crescent

#### ***Highgate Park***

– Clydesdale Road to Highgate Drive

#### ***Middleton Park***

– Risebrough Circuit to Empringham Crescent

#### ***Milliken Mills Park***

– Milliken Meadows Drive to Milliken Community Centre

#### ***Randall Park***

– Highglan Avenue to Randall Avenue

#### ***Risebrough Park***

– Risebrough Circuit to Birchmount Road

## SNOW WINDROW REMOVAL PROGRAM FOR SENIORS AND PERSONS WITH A DISABILITY




If everyone in your household is a senior (60 years of age or older) or a person with a disability (12 to 60 years of age), you can apply for Markham's Snow Windrow Removal Assistance Program.



Attended the winter maintenance press conference for the announcement of the expansion of the Pathway Winter Maintenance Program, and the addition of 5 new outdoor skating rinks

## WINTER MAINTENANCE REMINDER

### When are roads plowed?

| Road Type<br>Use Markham's Winter Maintenance App on <a href="http://markham.ca/winter">markham.ca/winter</a> to find out what type of road you live on. | When does the City start salting?<br>Salt is only effective for temperature -12°C and above. | When does the City plow?     | How much snow is that?   | How many hours after the snow stops falling does it take to clear an average storm? |
|--|--|------------------------------|--|---|
| <b>Primary</b>   | When snowfall begins   | 3cm                          | Paper clip  | 2 hours   |
| <b>Secondary</b>   | When snowfall begins   | 5cm                          | House key   | 3 to 12 hours   |
| <b>Local</b>   | When road condition is deemed slippery   | 7.5cm at the end of snowfall | Bank card   | 12 to 16 hours  |

If you do not see plows immediately after a snowfall, please check the Winter Maintenance App at [markham.ca/winter](http://markham.ca/winter) to find out their status.

### What should you expect after the plows have left?

After plowing, it is normal for some snow to be left on the surface of roads and lanes especially on local roads. Busy moving traffic on busy arterial and secondary roads help melt the snow, creating a bare surface faster than residential roads with less traffic.

It is still safe to drive on snow-covered roads as long as drivers drive according to weather and road conditions. Slow down and give yourself extra time to arrive at your destination safely.

Brine, salt and sand are used to prevent roads from becoming icy. Remember, salt is only effective at temperatures of -12 degrees Celsius and above. The City's Salt Management Plan promotes environmentally friendly salt use, storage and transportation.

### What can you do to keep yourself and our community safe?

- Push snow away from the street. Pushing snow onto the street makes it unsafe for drivers and pedestrians in your neighbourhood - and it's illegal.
- Park on the odd numbered side of the street from November 15 to April 15. If there is a snow storm or snowfall, you must remove your parked car from the road even if you have a permit. Plows are too big to squeeze past parked cars, delaying snow clearing for everyone.

## THE CITY OF MARKHAM'S DIVERSITY ACTION PLAN

The City of Markham is updating its Diversity Action Plan, part of the City's Building Markham's Future Together: 2020-2023 Strategic Plan, to continue to build a socially cohesive and inclusive community for all. Residents, businesses, clubs, and community and professional organizations were invited to participate in community consultations and surveys so that individuals and stakeholders can help shape the City's future and be a part of the conversation.

The City of Markham is one of the most diverse cities in Canada and launched its first Diversity Action Plan - Everyone Welcome in 2010. A multi-year plan that contained 67 recommendations, Everyone Welcome was developed through a comprehensive community consultation process involving more than 200 community groups and internal departments.

For more information, visit [markham.ca/DiversityActionPlan](http://markham.ca/DiversityActionPlan).

## THE CITY OF MARKHAM'S 2021 ASSET MANAGEMENT PLAN IS HERE!

We are excited to report that the City continues to successfully deliver the approved levels of service to its community and businesses in a financially sustainable way.

Interested to know how we manage and maintain our infrastructure assets?

Learn more: [markham.ca/AMP](http://markham.ca/AMP)

## MARKHAM FIRE AND HUMBER COLLEGE ENTER AGREEMENT TO PROMOTE DIVERSITY

Markham Fire and Emergency Services (MFES) and Humber College entered a unique agreement aimed at enhancing inclusion while reducing participation barriers for Black, Indigenous, and Racialized Markham students who wish to build a career in firefighting. As a member of the Race Relations Committee, this news signified a wonderful step towards the right direction.

This will open up great opportunities for many aspiring firefighters. This agreement creates a complete package of scholarships, equipment, supports for training and certification, summer job placements and mentorship to prime students for success.

Humber will offer eight scholarships, two each for four school terms, for

students to study for a two-year Fire Services diploma followed by a one-year Pre-Service Firefighter Education and Training program.

MFES will provide the students' equipment, pay for their DZ vehicle license and Ontario Fire Administration Inc. (OFAI) certification. During the school term, each will be paired with a current MFES staff member

who will provide mentorship and keep them connected to the fire service. Each student will also be offered summer employment in the administration office to learn other areas of the fire service and to build relationships.

Scholarship students who successfully complete their schooling and certification will be offered a job interview with MFES. Successful candidates will be offered employment as a Markham firefighter.

Scholarship applicants must live, work or attend school in Markham and identify as Black, Indigenous, and Racialized. The next intake for the 2022 to 2023 school year will be made in February 2022, with more information to follow on the City's website at [markham.ca/fire](http://markham.ca/fire).



MFES is donating this fire truck behind us, as well as equipment that is at the end of its life to Humber's Pre-Service Firefighter Education and Training Program





## ENVIROPACKS AVAILABLE AT MARKHAM PUBLIC LIBRARY

Introducing children to environmental issues just got easier. The City of Markham and Markham Public Library are offering a series of environmental learning backpacks — EnviroPacks.

Each backpack has a variety of books, activities and other educational tools about local wildlife and bio-diversity, energy conservation, gardening and waste management. These themes relate to the city's sustainability priorities, listed in the Greenprint, Markham's Sustainability Plan. They are intended to introduce children to local environmental issues, and are designed for children aged 7 to 12, families and educators.

EnviroPacks can be borrowed at no charge for up to three weeks, and are available at six Markham Public Library branches. Visit [www.markhampubliclibrary.ca](http://www.markhampubliclibrary.ca) to see if your branch has an EnviroPack available!



## HOME ENERGY RETROFITS

***Do you have cold air coming in from your walls, windows, or doors?***

Prevent heat loss by improving the insulation in your home.

The Home Winterproofing Program from Enbridge Gas Inc. can help you lower your natural gas bill and make your home more comfortable. If your home and household income levels qualify, you'll get free insulation, draft proofing and a smart thermostat to reduce energy costs up to 30%.

Learn more about this program at [yourvoicemarkham.ca](http://yourvoicemarkham.ca) and selecting Home Energy Retrofits. Under Rebates & Incentives, please click on Home Winterproofing for more details.

## SHARE YOUR INPUT -RETROFITTING YOUR HOME



***The City is also looking for input on how residents like yourself can be encouraged to retrofit your home.***

Are you interested in seeing more workshops on deep retrofits? Do you want more information on how to make your home net zero ready? Share your ideas on what would encourage, inspire and assist you to improve the energy efficiency of your home.



Visited EPS Care Technologies Inc, a business in Ward 8 using hot water degradable and bio-degradable new materials for disposable masks, shopping bags, tableware and more



Visited The Postcard Factory, a local business in Ward 8, to discuss the impact of the pandemic on businesses

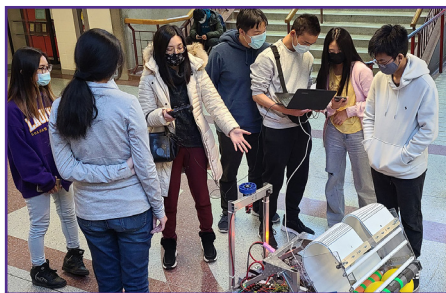


## COVID-19 VACCINES FOR CHILDREN

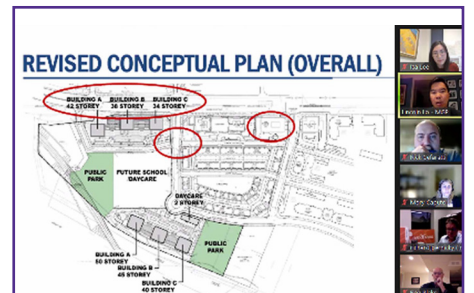
Bookings now open for COVID-19 vaccines for 5- to 11-year-olds.

Clinics are conveniently located at schools, pop-up locations and community clinics across York Region.

Appointments are required.  
Book now at [york.ca/COVID19Vaccine](http://york.ca/COVID19Vaccine)



It was a pleasure to be able to help Milliken Mills High School's Robotics Team gather sponsorship so they can compete in their first robotics competition. These young, talented and passionate students gave me a quick lesson on how to operate 'Bob' the robot.



Held a community information meeting to gather feedback regarding the proposed high-rise residential development along the West side of South Park Road, South of Highway 7



**f @ CouncillorIsaLee** **IsaSeWan**

**Contact Centre:** If you have an issue regarding City of Markham's services, programs, or inquiries (e.g. by-laws, license, garbage, recycling, trees, roads) please contact the City's Contact Centre at (905) 477-5530 or [customerservice@markham.ca](mailto:customerservice@markham.ca).

FSC ICON