

This drawing, as an instrument of service, is provided by and is the property of Graziani + Corazza Architects Inc. The contractor must verify and accept responsibility for all dimensions and conditions on site and must notify Graziani + Corazza Architects Inc. of any variations from the supplied information. Graziani + Corazza Architects Inc. is not responsible for the accuracy of survey, structural, mechanical, electrical, etc., engineering information shown on this drawing. Refer to the appropriate engineering drawings before proceeding with the work. Construction must conform to all applicable codes and requirements of the authorities having jurisdiction. Unless otherwise noted, no investigation has been undertaken or reported on by this office in regards to the environmental condition of this site.

This drawing is not to be scaled. All architectural symbols indicated on this drawing are graphic representations only.

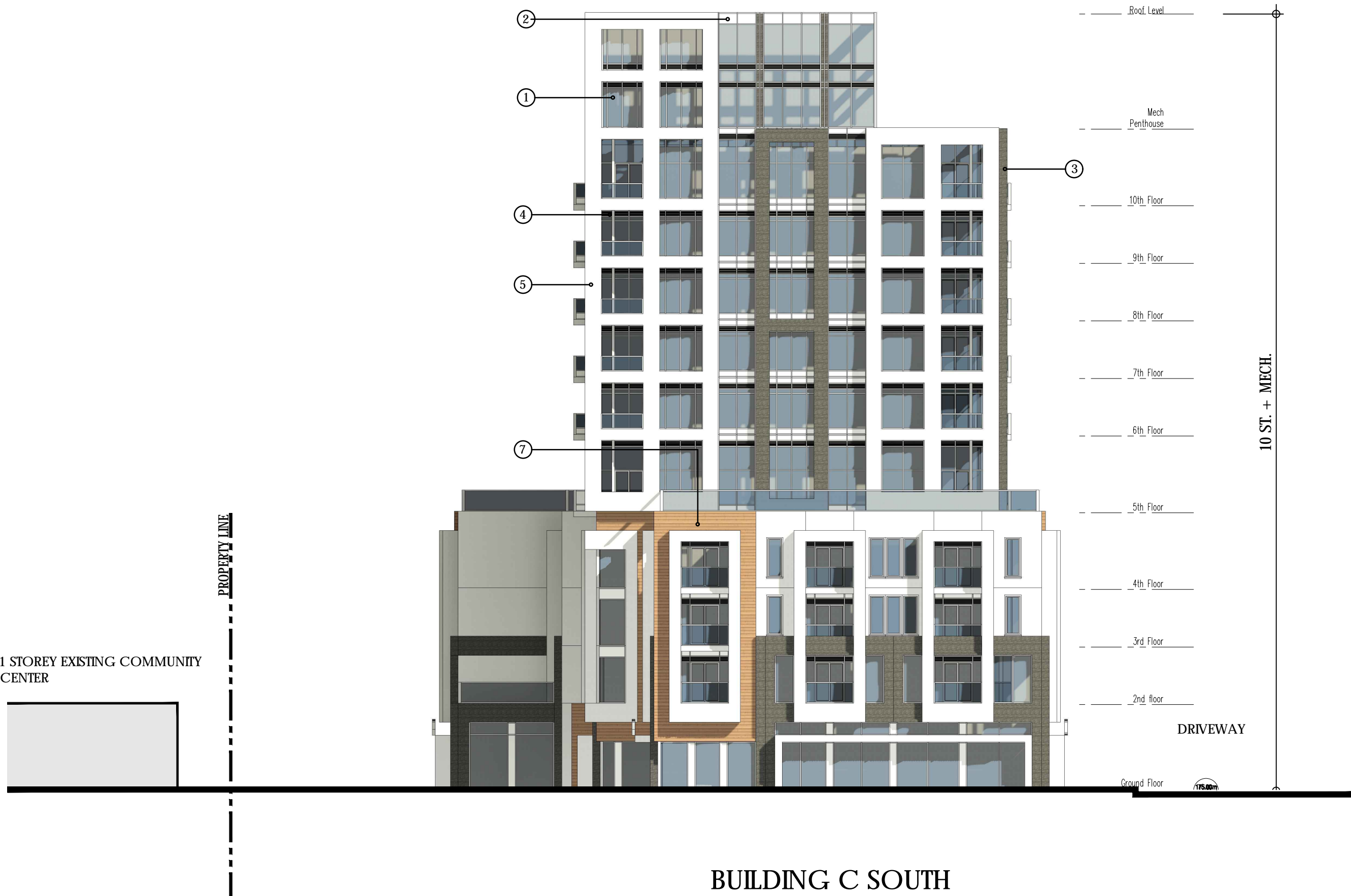
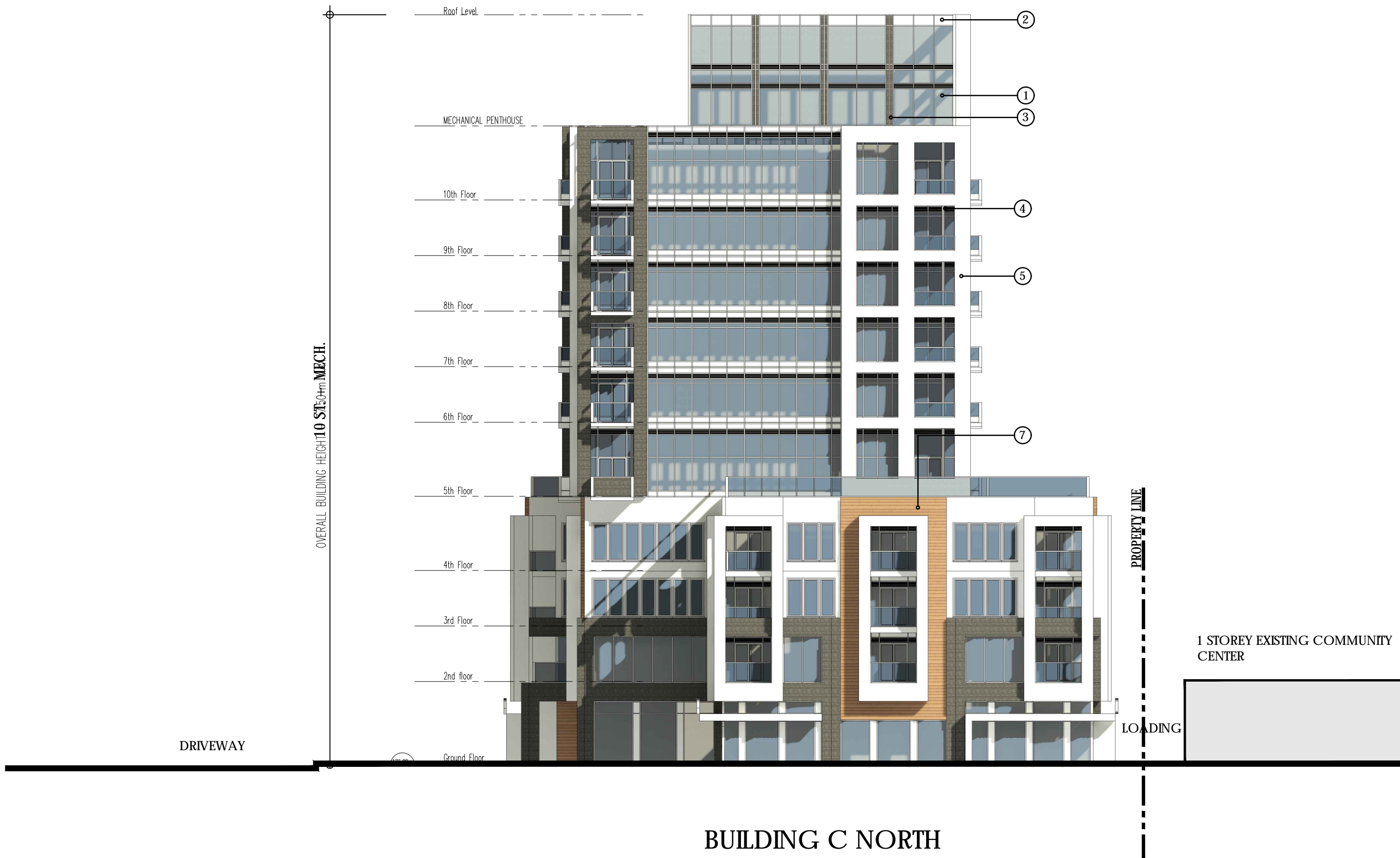
Conditions for electronic information transfer

Electronic information is supplied to the other associated firms to assist them in the execution of their work/phase. The recipient firms must determine the completeness/appropriateness/relevance of the information in respect to their particular responsibility.

Graziani + Corazza Architects Inc. shall not be responsible for:

- Errors, omissions, incompleteness due to loss of information in whole or part when information is transferred.
- Transmission of any virus or damage to the receiving electronic system when information is transferred.

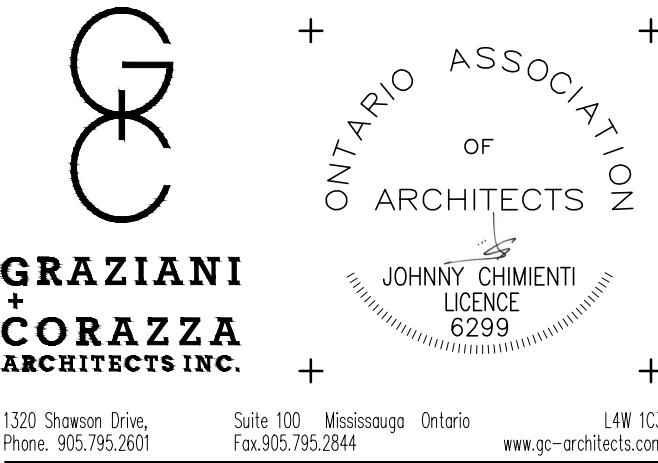
1. OCT.09.2020 ISSUED FOR ZBA J. CHI.



MATERIAL LEGEND

- ① CLEAR GLASS
MANUFACTURER:
DESCRIPTION: CLEAR
- ② SPANDREL PANEL
MANUFACTURER:
DESCRIPTION: WHITE
- ③ BRICK
MANUFACTURER:
DESCRIPTION: GREY
- ④ LOUVER
MANUFACTURER:
DESCRIPTION: CHARCOAL
- ⑤ METAL PANEL 1
MANUFACTURER:
DESCRIPTION: WHITE
- ⑥ METAL PANEL 2
MANUFACTURER:
DESCRIPTION: BLACK
- ⑦ METAL PANEL 3
MANUFACTURER:
DESCRIPTION: BROWNWOOD FINISH

issued for revisions



PROPOSED MIXED-USE DEVELOPMENT

300 JOHN STREET

MARKHAM	Timbercreek	ONTARIO
Project Architect:	J. Chimienti	
Assistant Designer:	A. Hassan	
Drawn By:	A. Hassan	
Checked By:	D. Biase	
Plot Date:	OCT.13.2020	
Job #	1668.18	

ELEVATION
BUILDING C

1:200 A404