

SURVEYOR'S CERTIFICATE

I CERTIFY THAT:

1. THIS SURVEY AND PLAN ARE CORRECT AND IN ACCORDANCE WITH THE SURVEYOR'S ACT, THE SURVEYORS ACT AND THE LAND TITLES ACT AND THE REGULATIONS MADE UNDER THEM.

2. THE SURVEY WAS COMPLETED ON THE _____ DAY OF _____, 2019

C. WAHBA
ONTARIO LAND SURVEYOR



C. WAHBA
ONTARIO LAND SURVEYOR

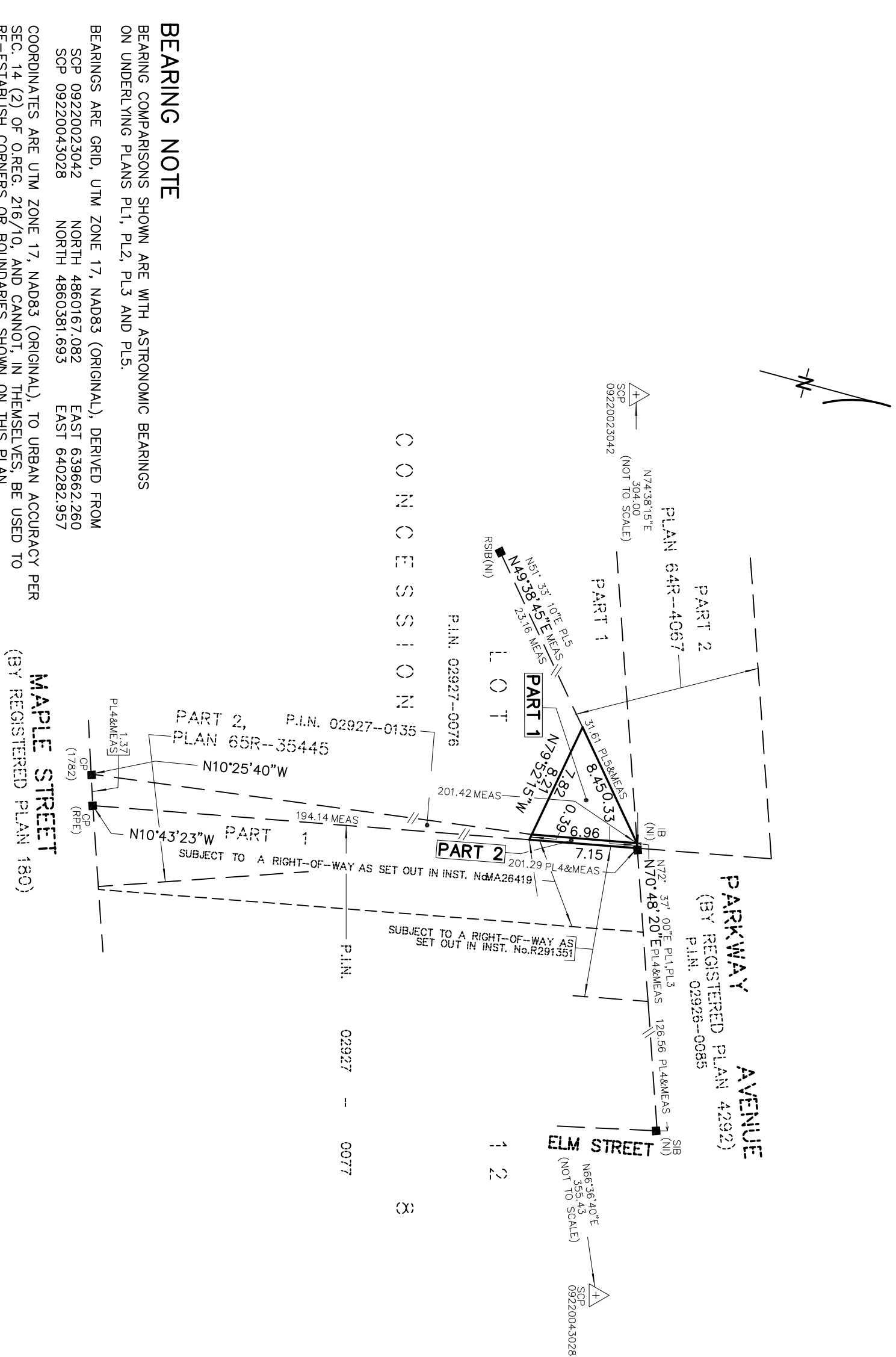
DATE _____, 2019

RECEIVED AND DEPOSITED

PLAN 65R-

REPRESENTATIVE FOR LAND REGISTRAR FOR THE
LAND TITLES DIVISION OF YORK REGION (No.65)

PART	PART OF LOT	CONCESSION	PART OF P.L.N.
1			02927-0076
2	12	8	02927-0135



BEARING COMPARISONS SHOWN ARE WITH ASTRONOMIC BEARINGS ON UNDERLYING PLANS PL1, PL2, PL3 AND PL5.

BEANSIONS GRID, UTM_ZONE 17, MADS3 (ORIGINAL), DERIVED FROM
SCP 092220025042 NORTH 480167.082 EAST 539662.260
SCP 092200040028 NORTH 4603191.691 EAST 5440232.957
COORDINATES ARE UTM_ZONE 17, MADS3 (ORIGINAL), TO URBAN ACCURACY PER
SEC. 14 (2.52) CORRS. OF BOUNDARIES SHOWN ON THIS PLAN.
DISTANCES ARE GROUND AND CAN BE CONVERTED TO GRID BY MULTIPLYING BY
THE COMBINED SCALE FACTOR OF 0.999821.

MAPLE STREET
(BY REGISTERED PLAN 180)

R-PE SURVEYING LTD.
ONTARIO LAND SURVEYORS
643 Christie Road, Suite 7
Woodbridge, Ontario L4L 8A3
Tel. (416) 635-5000 Fax (416) 635-5001
Tel. (905) 264-0881 Fax (905) 264-2099
Website: www.r-pe.ca
DRAWN: J.A. CHECKED: C

JOB No. 15-320

CAD FILE No. 15-320-R02

Dec 17, 2019 - 14:50:56