

**Stage 1 Archaeological Assessment
Highway 404 North Collector Roads
Municipal Class Environmental Assessment
City of Markham
Regional Municipality of York
Part of Lots 28–31, Concession 3
Geographic Township of Markham
York County, Ontario**

Prepared for
CIMA+
3027 Harvester Road, Suite 400
Burlington, ON L7N 3G7
Tel: (289) 288-0287

Licensed under
P.J. Racher
MTCS Licence #P007
PIF #P007-0985-2019
ARA File #2017-2022

19/08/2019

Supplementary Documentation

TABLE OF CONTENTS

1.0	SUPPLEMENTARY DOCUMENTATION	1
1.1	Detailed Site Location Information	1
2.0	SD MAPS	2
3.0	BIBLIOGRAPHY AND SOURCES	4

LIST OF SD MAPS

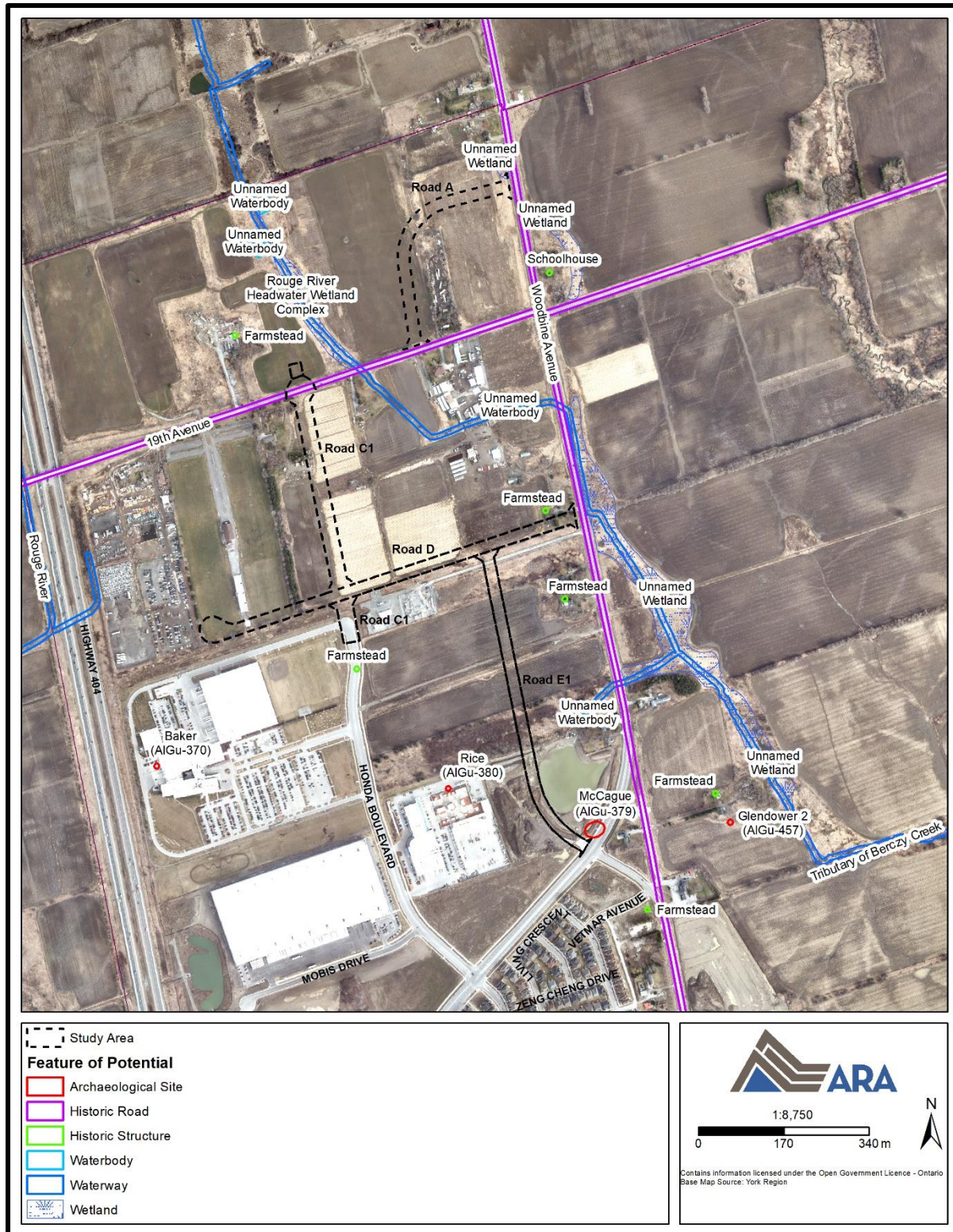
SD Map 1: Features of Potential with Site Information	2
SD Map 2: Potential Modelling and Recommendations with Site Information	3

1.0 SUPPLEMENTARY DOCUMENTATION

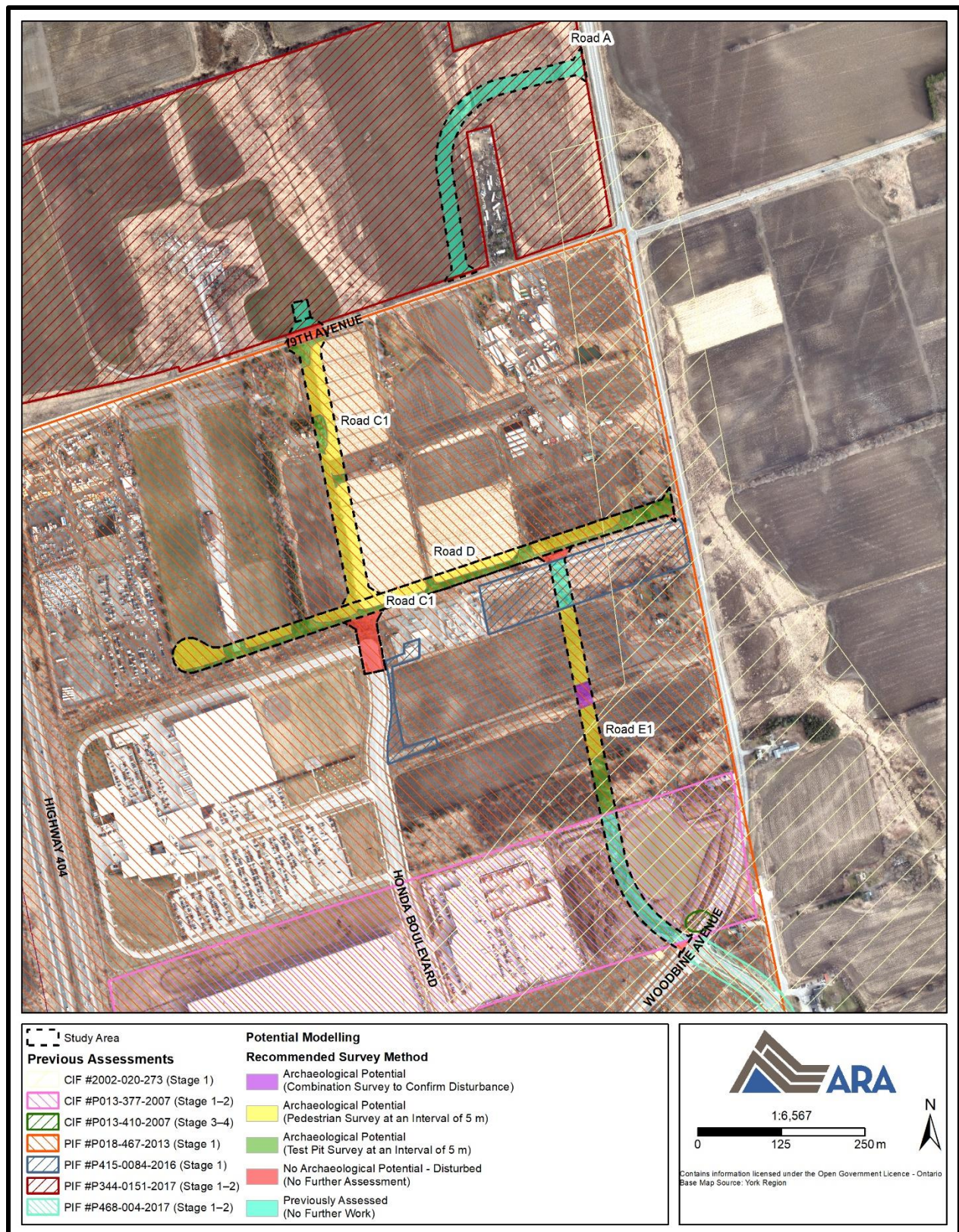
1.1 Detailed Site Location Information

In keeping with Section 7.6.1 of the *Standards and Guidelines for Consultant Archaeologists* (MTC 2011:130), detailed site location information was not included within the project report. The locations of the previously identified archaeological sites falling within 300 m of the study area are presented in SD Map 1, and the limits of the previous Stage 3 and 4 investigations conducted within 50 m appear in SD Map 2. This information should be excluded from the Ontario Public Register of Archaeological Reports.

2.0 SD MAPS



SD Map 1: Features of Potential with Site Information
(Produced under licence using ArcGIS® software by Esri, © Esri)



SD Map 2: Potential Modelling and Recommendations with Site Information
(Produced under licence using ArcGIS® software by Esri, © Esri)

3.0 BIBLIOGRAPHY AND SOURCES

Ministry of Tourism and Culture (MTC)

2011 *Standards and Guidelines for Consultant Archaeologists*. Toronto: Ministry of Tourism and Culture.