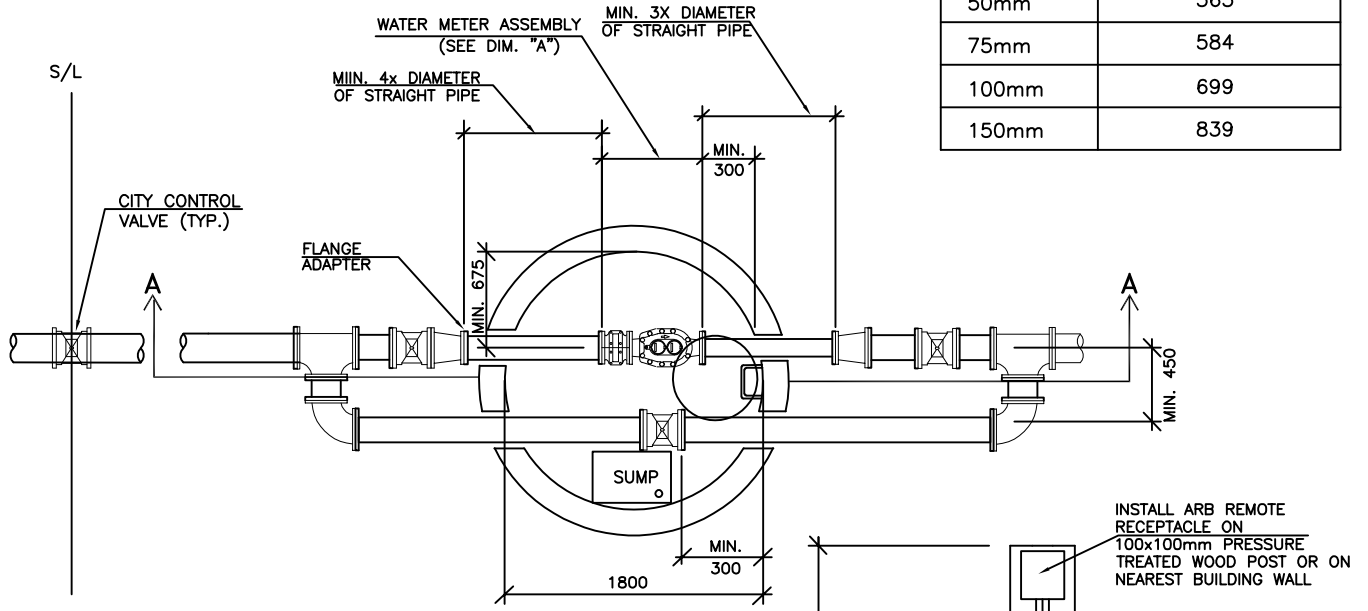
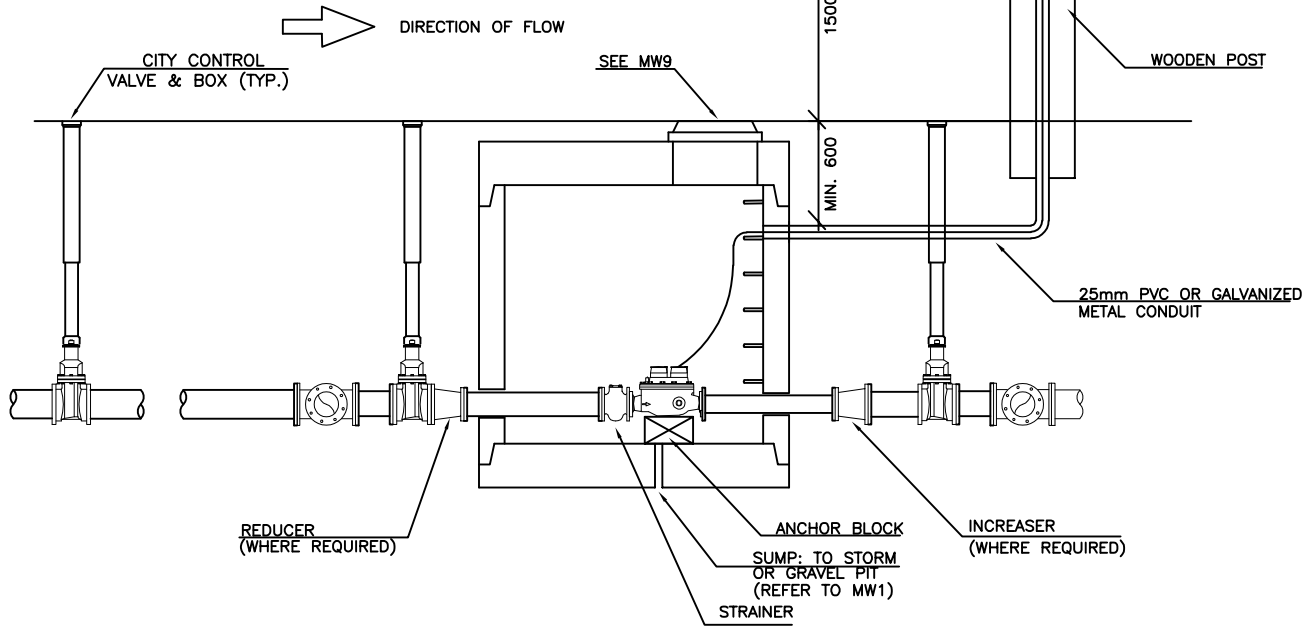


METER SIZE	DIM. "A" (INCLUDING STRAINER)
50mm	565
75mm	584
100mm	699
150mm	839

PLAN



SECTION A-A



NOTES:

1. IN INSTANCES WHERE NO STRAINER IS USED, A MINIMUM OF 8X DIAMETER OF STRAIGHT PIPE SHALL BE MAINTAINED UPSTREAM OF THE METER.
2. ALL PIPE JOINTS INSIDE THE METER CHAMBER SHALL BE FLANGE TO FLANGE UNLESS NOTED OTHERWISE.
3. USE MW22 OR MW23 IF FIRE PROTECTION IS REQUIRED.
4. ALL PIPE MATERIAL SHALL BE POLYVINYL CHLORIDE (PVC) AS PER THE APPROVED MANUFACTURERS PRODUCT LIST IN THE CITY'S DESIGN CRITERIA.

ALL DIMENSIONS ARE IN MILLIMETERS, UNLESS OTHERWISE SHOWN.



ENGINEERING DEPARTMENT, CITY OF MARKHAM

REV. 1 JAN. 2019

COMPOUND TYPE WATER METER INSTALLATION IN CHAMBER (FOR DOMESTIC ONLY)

MW21

N.T.S.