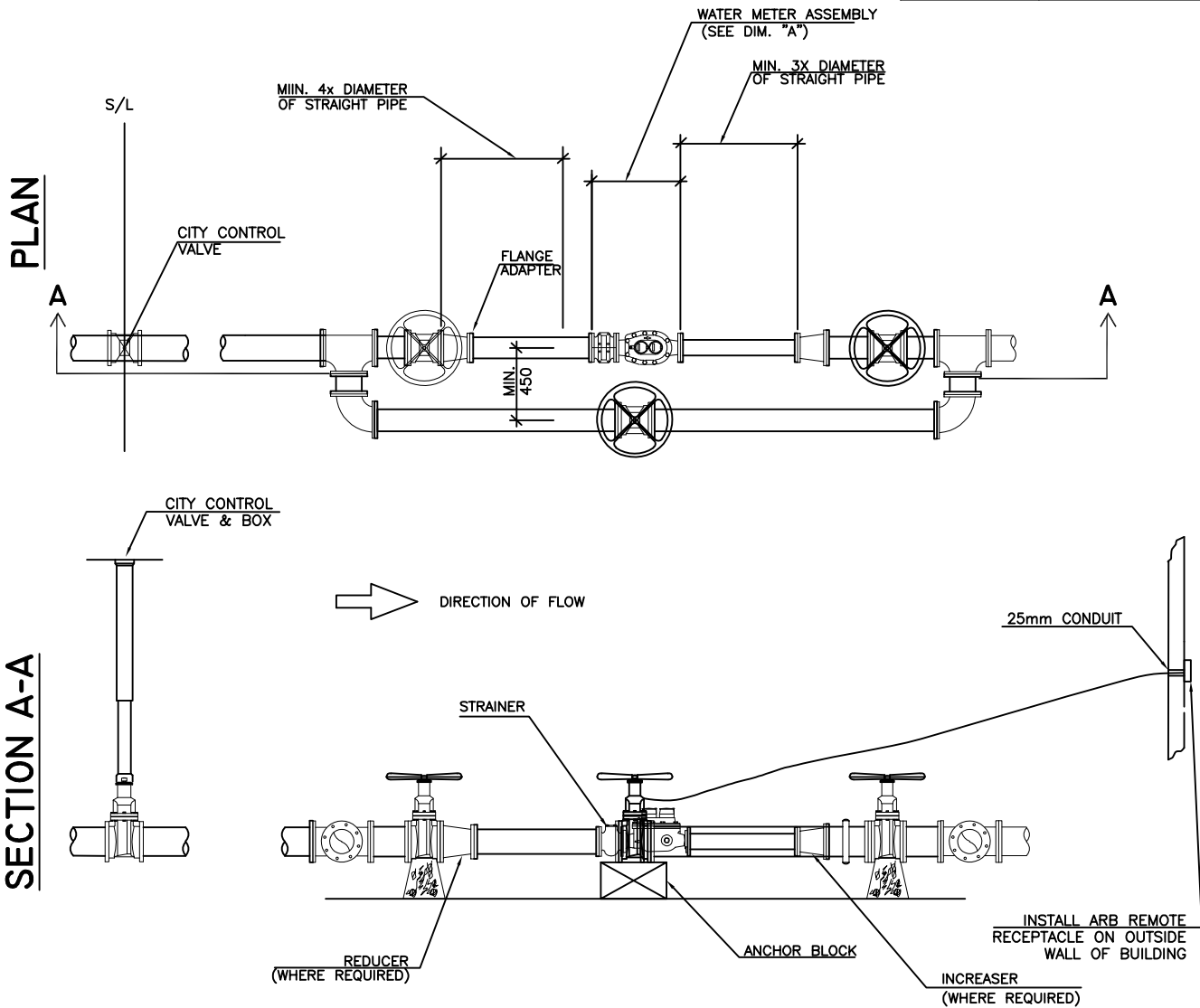


METER SIZE	DIM. A (INCLUDING STRAINER)
50mm	565
75mm	584
100mm	699
150mm	839



NOTES:

1. IN INSTANCES WHERE NO STRAINER IS USED, A MINIMUM OF 8X DIAMETER OF STRAIGHT PIPE SHALL BE MAINTAINED UPSTREAM OF THE METER.
2. ALL PIPE JOINTS INSIDE THE METER ROOM SHALL BE FLANGE TO FLANGE UNLESS NOTED OTHERWISE.
3. ALL PIPE MATERIAL SHALL BE POLYVINYL CHLORIDE (PVC) AS PER THE APPROVED MANUFACTURERS PRODUCT LIST IN THE CITY'S DESIGN CRITERIA.

ALL DIMENSIONS ARE IN MILLIMETERS, UNLESS OTHERWISE SHOWN.



ENGINEERING DEPARTMENT, CITY OF MARKHAM

REV.1 | JAN. 2019

COMPOUND TYPE WATER METER INSTALLATION IN METER ROOM (FOR DOMESTIC ONLY)

MW21A

N.T.S.